

Alaska Department of  
Corrections  
2022  
Offender Profile

Vigilance - Pride - Dedication

Vol. 019

PREPARED BY: DOC Research & Analysis Unit

DATE: 01 Jan 2023

Trends, Counts & Percentages

32  
Population Data  
Sets From 2022



# The Constitution of the State of Alaska

## Article 1 Section 12

Excessive bail shall not be required, nor excessive fines imposed, nor cruel and unusual punishments inflicted. Criminal administration shall be based upon the following: the need for protecting the public, community condemnation of the offender, the rights of victims of crimes, restitution from the offender, and the principle of reformation.

---



The Alaska Department of Corrections provides secure confinement, reformatory programs, and a process of supervised community reintegration to enhance the safety of our communities.

We are trained professionals committed to a safe, open and respectful organization.

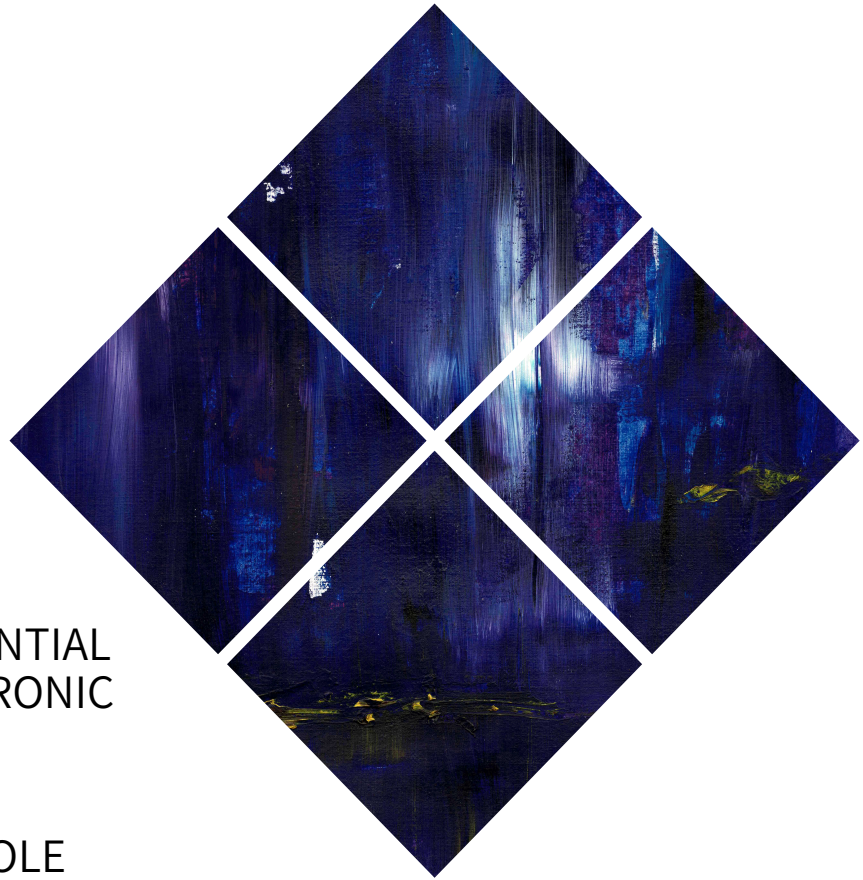
We are dedicated to public safety and will always respect the rights and dignity of victims of crime. Offenders in our charge will be treated in a safe and humane manner, and will be expected to enhance their ability to reform every day.





# CONTENTS

<b>pg 4</b>	INTRODUCTORY REPORT
<b>pg 7</b>	TRENDS
<b>pg 15</b>	INSTITUTIONS
<b>pg 34</b>	COMMUNITY RESEDENTIAL CENTERS and ELECTRONIC MONITORING
<b>pg 42</b>	PROBATION and PAROLE
<b>pg 44</b>	PRETRIAL COMMUNITY SUPERVISION
<b>pg 46</b>	RECIDIVISM



Graphs and charts in this edition of  
The Offender Profile have been  
optimized for viewing by  
color blind readers.







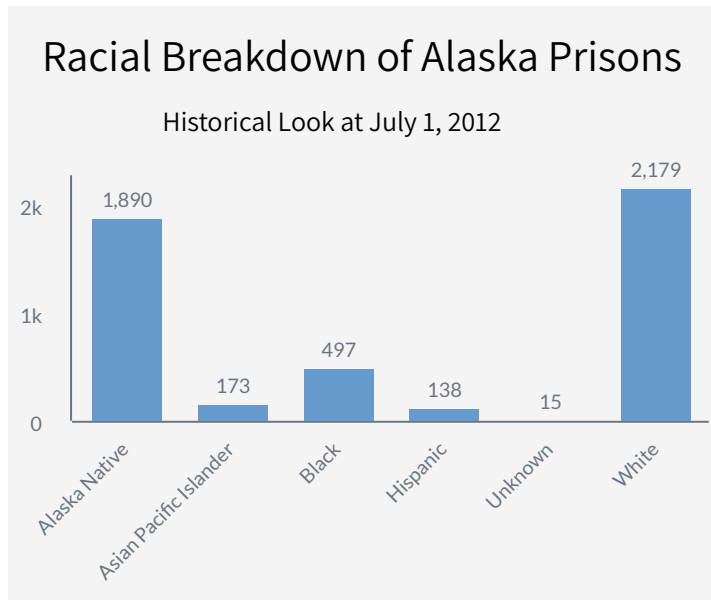
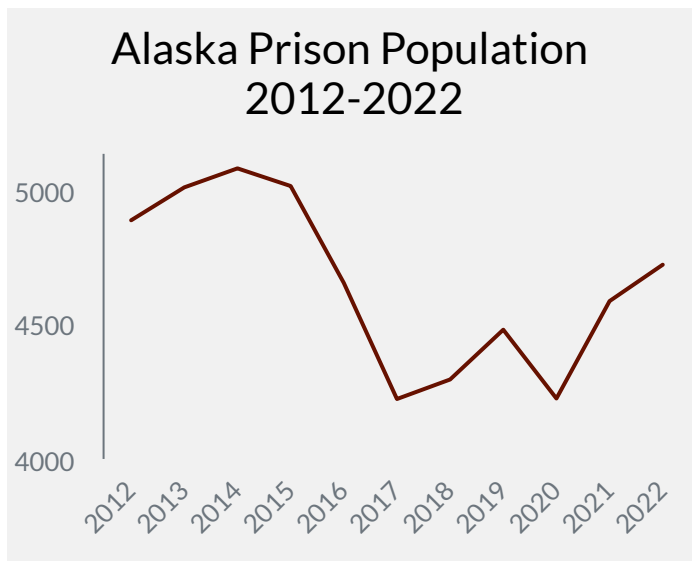
Introduction

# A Decade Later Where are they now?

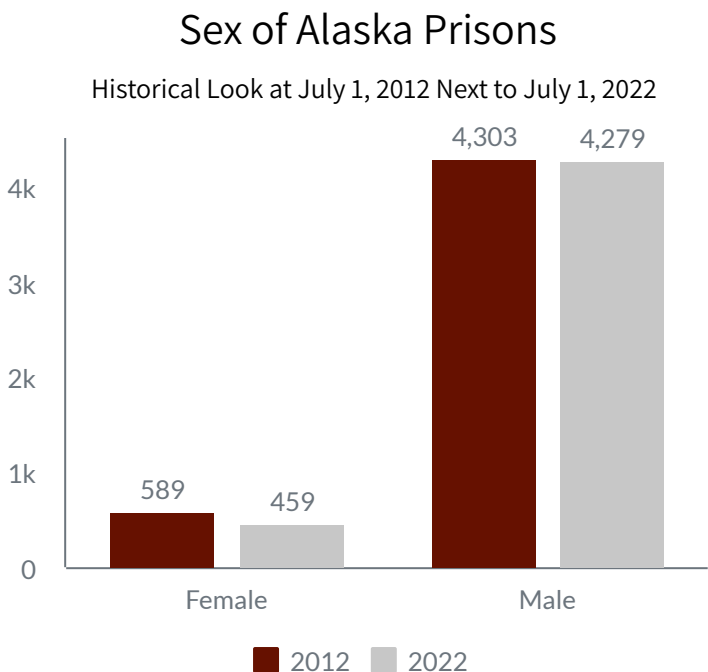
September 2022 | David Phillips

In July of 2012, the Alaska prison population was 4,892. Between 2012 and 2022, Alaska's prison population rose significantly peaking in 2014 before falling considerably. The population bottomed out in 2020 during the height of the Coronavirus Pandemic, and returned to roughly the same level by mid 2022.

**"...it is important to get a sense of who these prisoners were."**



Before finding out what happened to prisoners from 2012, it is important to get a sense of who these prisoners were. Similar to prison populations throughout the United States, Alaska's 2012 prison population demographics did not match the population as a whole. Men accounted for 88% of Alaska's prison population in 2012. Racial proportions with Alaska's prisons do not mirror the proportions shown throughout the state. Alaska Natives made up 39% of the state prison population while accounting for 16% of the state's total population in 2012.



Continued on next page.

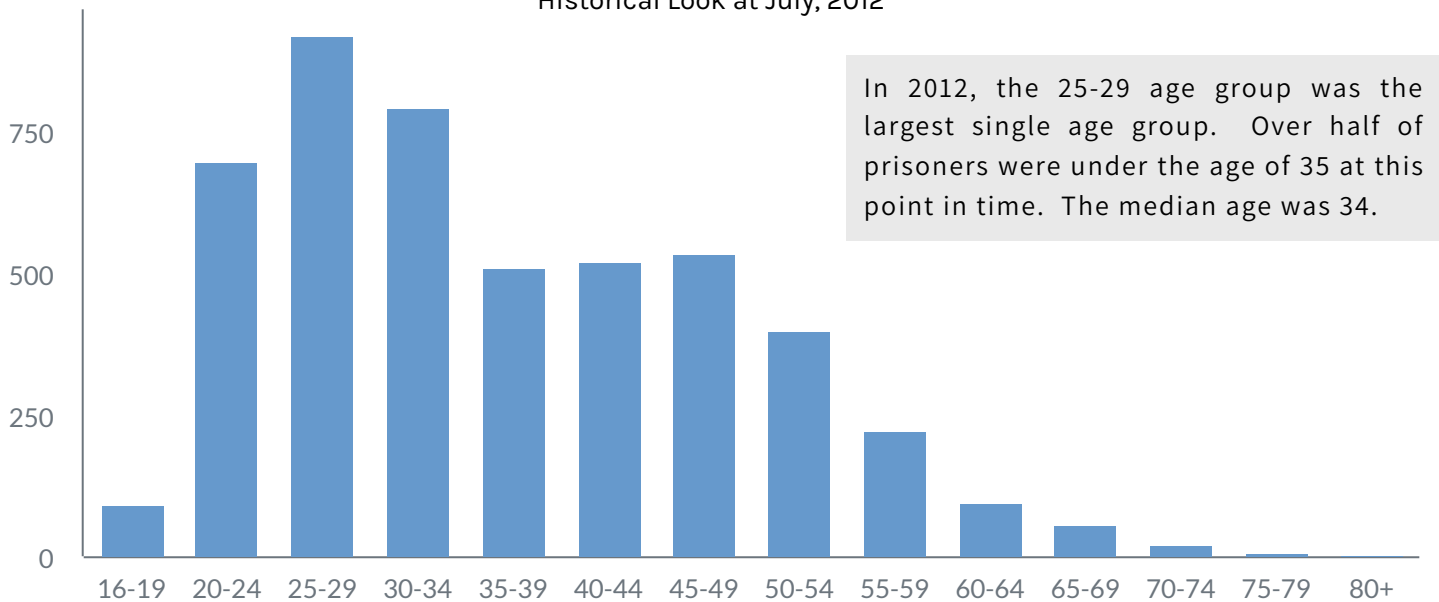




## Introduction

### Age Groupings

Historical Look at July, 2012



### One Year Later

54% of the 2012 cohort were still incarcerated on July 1, 2013. Of that group, 72% were continuously incarcerated. Twenty eight percent were released and subsequently returned to prison. The July 1, 2013 total prison population is made up of 53% of the 2012 cohort group. The changes in one year are quite dramatic. Less than half of the cohort stayed in prison the entire time. The second most popular group, discharged, are individuals who are no longer in prison and under no form of custody. This is followed closely by the probation and parole group. These are prisoners who are still under some form of sanction. Prisoners that left prison and returned follows closely after. The other groupings are not statistically significant. These groupings include those in CRC facilities, on electronic monitoring or those who have died.

### Three & Five Years Later

In 2015 the discharged category became the largest group. Additionally, more of the cohort was under probation & parole than those that returned to prison. Other groups, with the exception of deaths, maintained similar proportions.

In 2017 the imprisoned group saw the largest drop in population. Most of the cohort group had been released. Deceased increased by 66%. This was the largest increase and a significant jump in two years. Incarceration at time of death was not necessary for this count.

### Ten Years Later

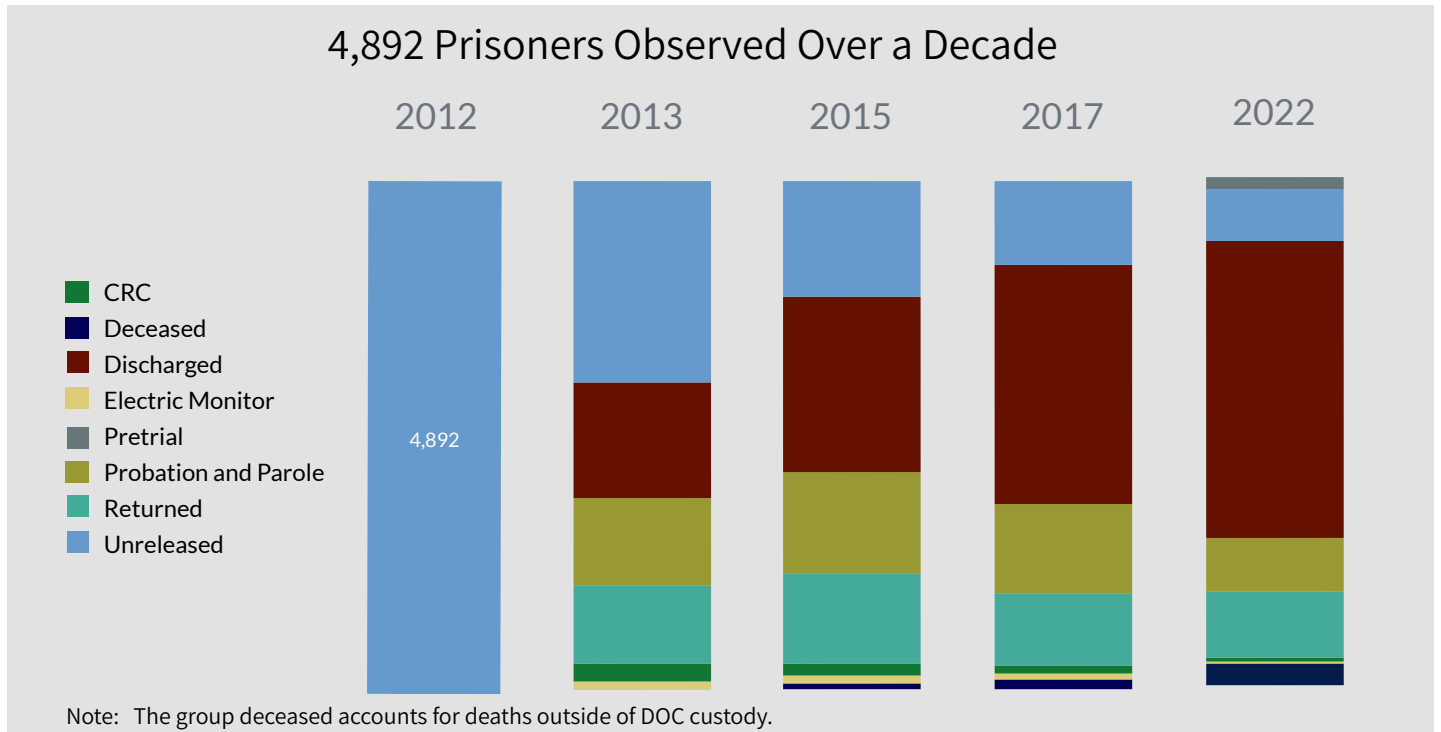
By July of 2022 the majority of this cohort has been discharged. Most of the prisoners from 2012 are no longer under any DOC supervision. Although returnees are the second largest category, this group size has decreased. Ten years on, 222 individuals died. This accounts for 4.5% of the cohort.

Continued on next page.





## Introduction



The number of deceased exceeds those in CRCs, Pretrial and Electronic Monitoring combined. The 2012 cohort made up 24% of the 2022 body of prisoners. Approximately three quarters of the 2022 prison population was not in prison ten years prior.

988 prisoners were incarcerated once, released and did not return. 500 were imprisoned once and are still incarcerated. 3,334 of the original cohort were released and returned to DOC custody 1 to 25 times. 58 returned 26 to 50 times within the decade. 9 prisoners returned 50 to 99 times and 3 prisoners were released and returned over 100 times. See the graph on page 51 for a visual of these numbers.

### 1 Year Later Over Five Years

This portion of the study looks at where prisoners were one year later for 5 different years. The cohorts were gathered from 2017 through 2021. Similar results appear for each year. Typically, half of all prisoners were still incarcerated one year later. The 2nd

largest group are people discharged and no longer under DOC custody. The next most likely group are people who have left prison and are now under Probation or Parole, followed by individuals who left prison at some point during the year and then returned to custody.

The largest change found over the five-year period is in the pretrial designation. Pretrial offenders are offenders awaiting the outcome of trial who are under DOC observation, but not in custody. Pretrial was established in 2016 by Senate Bill 91 and modified by Senate Bill 54 in 2017. Starting with the 2017 cohort, some prisoners were in Pretrial status. This number was below other prison alternatives such as CRCs and electronic monitoring. Going forward, pretrial numbers will likely increase as unsentenced prisoners are placed in pretrial status rather than incarceration while awaiting the outcome of trial.

Continued on page 51





TRENDS

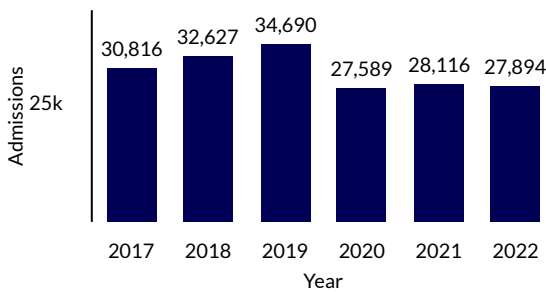
# Offender Population and Admissions

2022 | DOC Research & Analysis

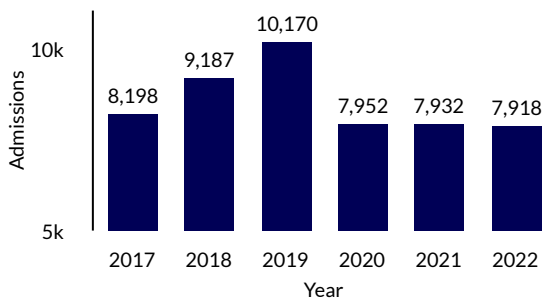
Count and admissions data include information about all offenders under the jurisdiction of the State of Alaska who are entered into the Alaska Corrections Offender Management System, also known as ACOMS. Count information consists of monthly averages and daily counts.

Incarcerated offenders not entered into the ACOMS database when a count is tallied are not included. Admissions data includes all criminal admits, non-criminal admits and federal holds for all offenders, but does not include any transfers from one facility to another.

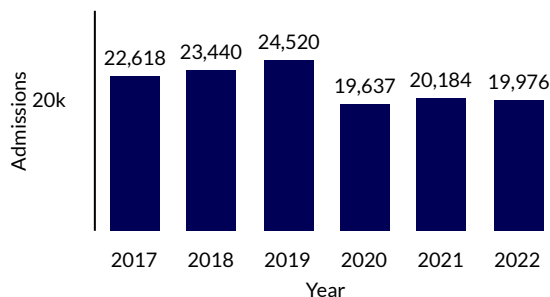
Total Admissions by Year



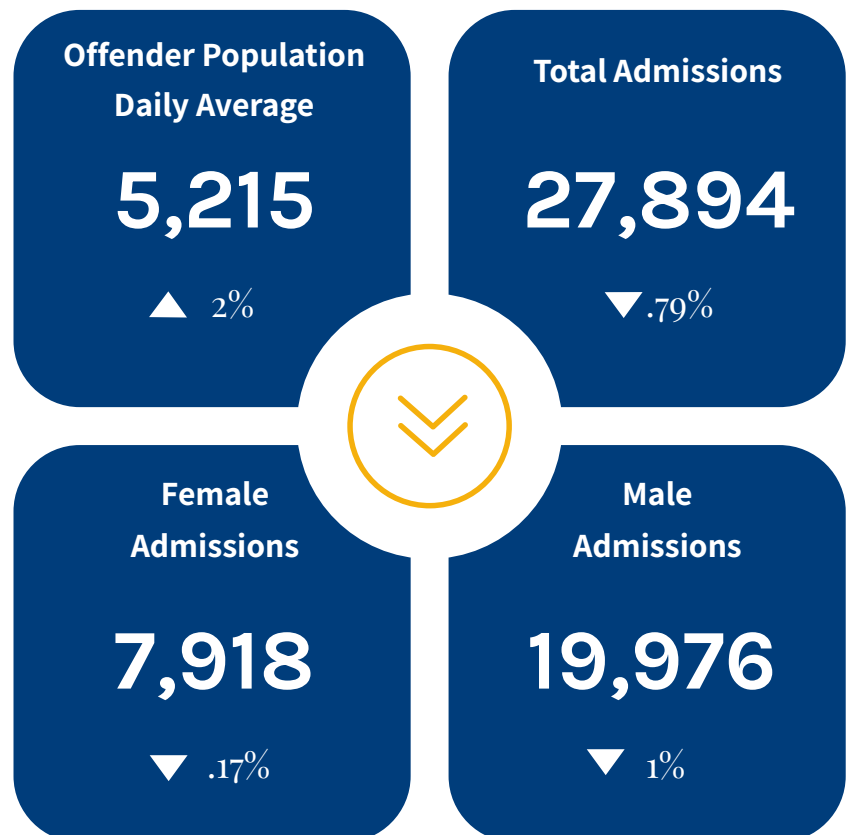
Female Admissions by Year



Male Admissions by Year



Maximum admissions values in the graphs above vary.



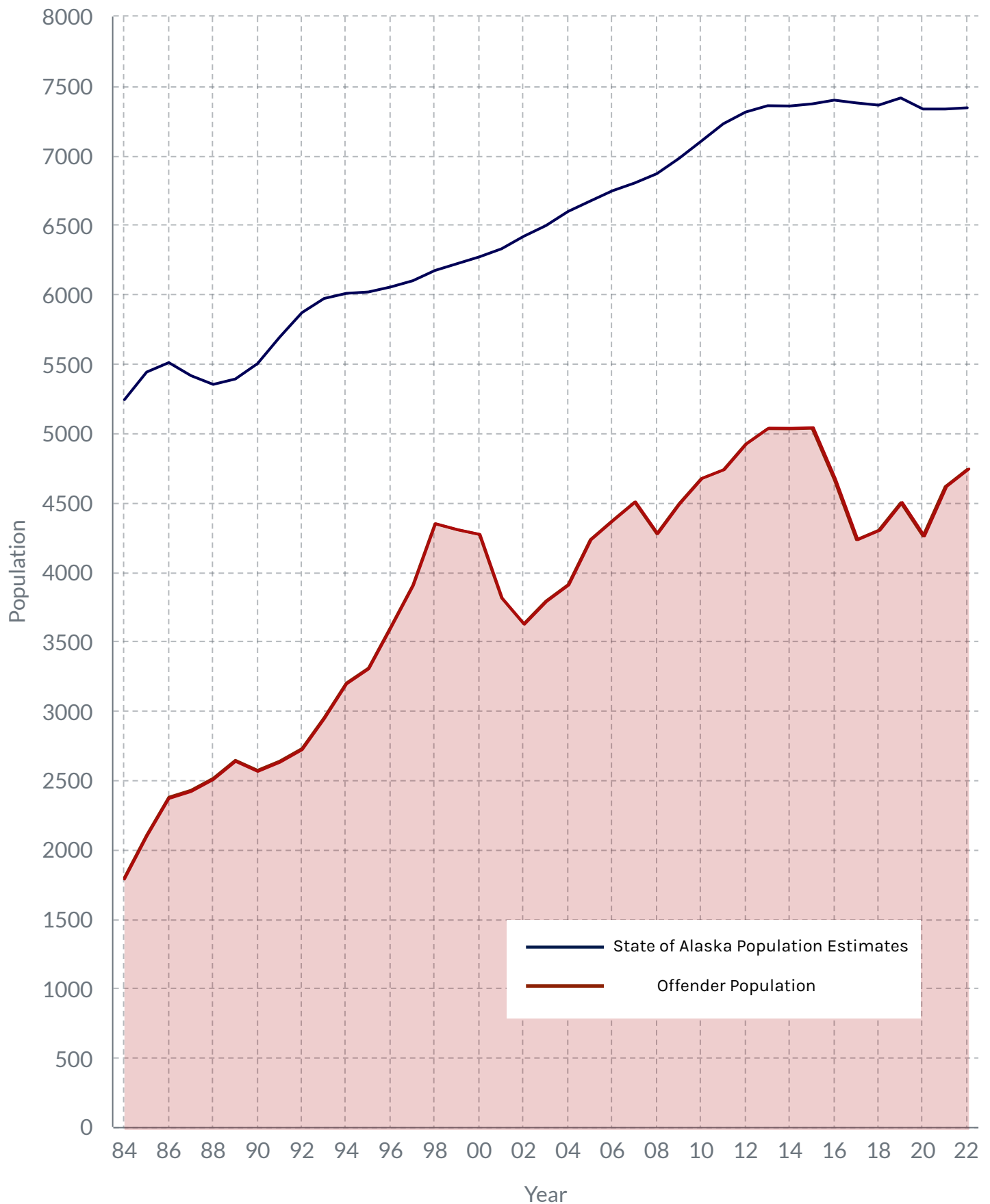
- The offender population daily average includes in-state prisons, out-of-state prisons, electronic monitoring, home confinement and community residential centers.

-- Percentages reflect rate of change in count from prior year.





## State Population Estimates Compared to Offender Population as of July 1, 1984-2022\*

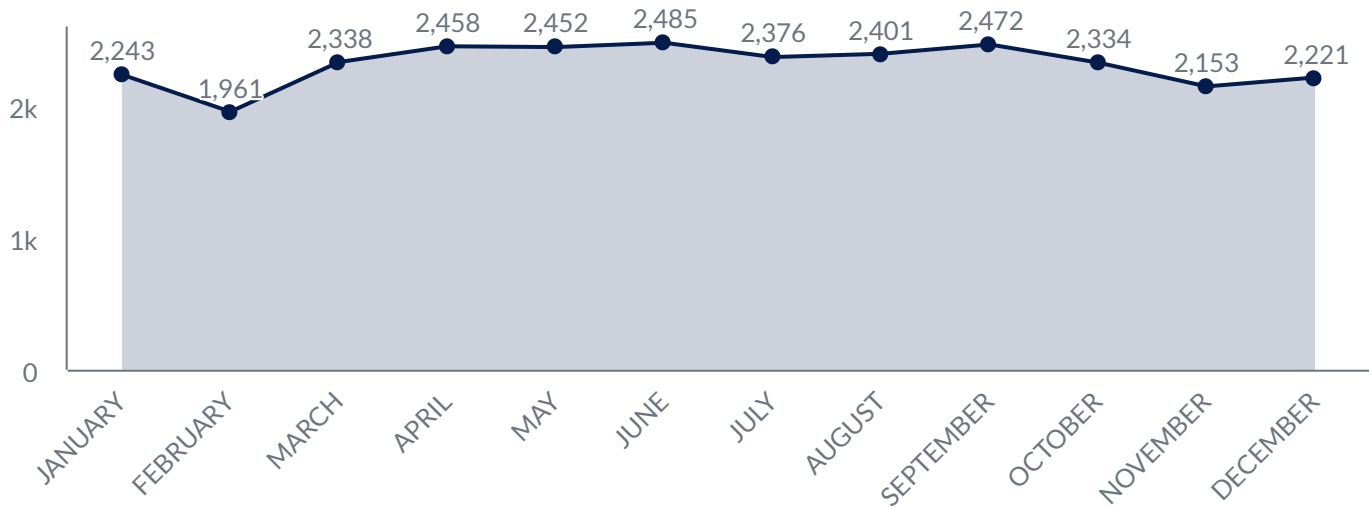


\* Alaska Population (in100's) is estimated by AK Dept. of Labor, Research and Analysis Section.





## 2022 Admissions by Month



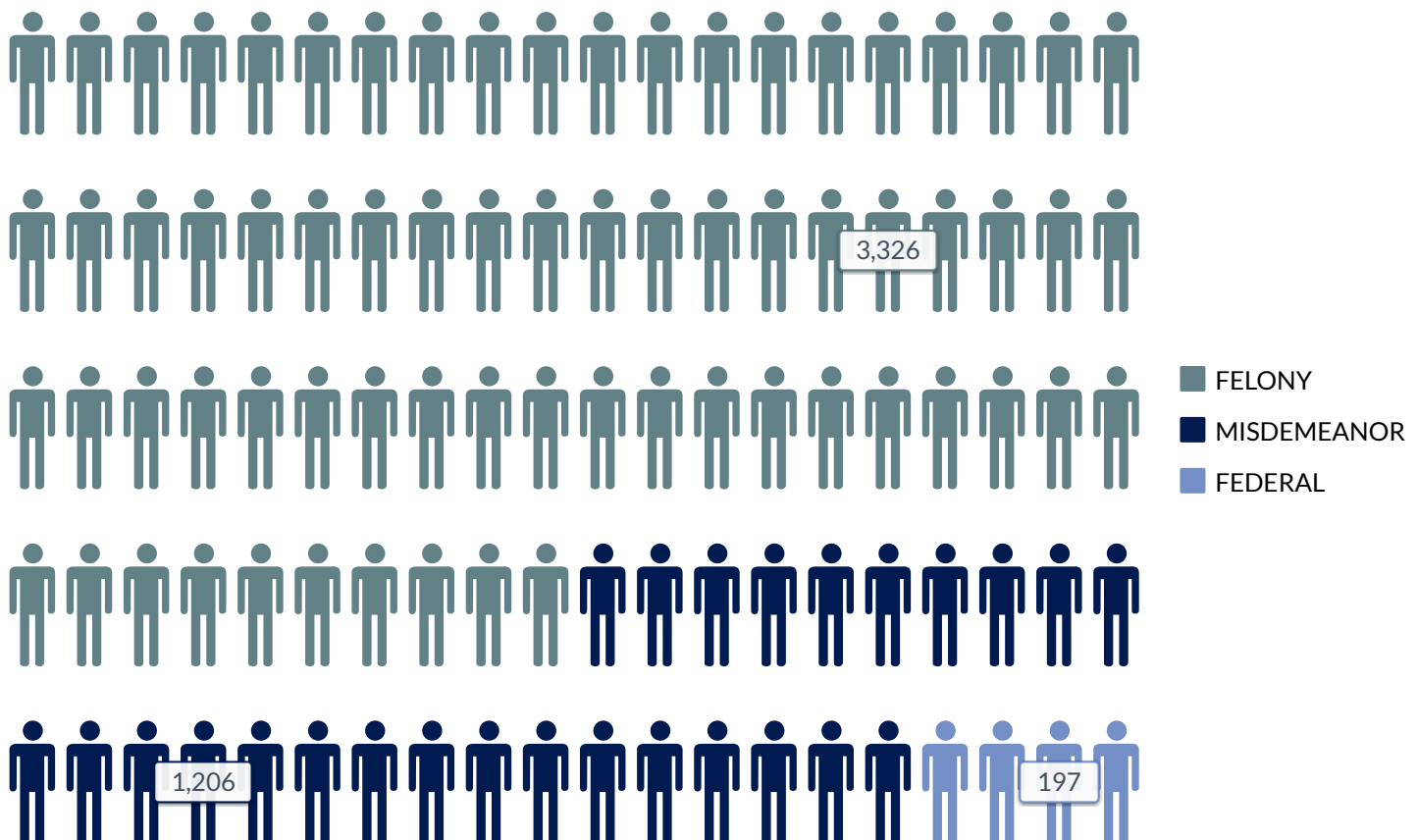
Month	Female	Male	Total
January	625	1,618	2,243
February	604	1,357	1,961
March	628	1,710	2,338
April	670	1,788	2,458
May	702	1,750	2,452
June	726	1,759	2,485
July	704	1,672	2,376
August	672	1,729	2,401
September	708	1,764	2,472
October	620	1,714	2,334
November	603	1,550	2,153
December	656	1,565	2,221
Total	7,918	19,976	27,894



## Counts and Percentages of Offenders in Institutions by Level of Offense: July 1, 2022

Offense Level	Females	% of Females	Males	% of Males	Total	% of Total
Federal	17	3.70%	180	4.20%	197	4.16%
Felony	276	60.13%	3,050	71.28%	3,326	70.20%
Misdemeanor	165	35.95%	1,041	24.33%	1,206	25.45%
Violation	1	0.22%	8	0.19%	9	0.19%
TOTAL	459	100.00%	4,279	100.00%	4,738	100.00%

## Counts and Percentages of Offenders in Institutions by Level of Offense: July 1, 2022



- Violation counts are below 1% and have been omitted from this graph.

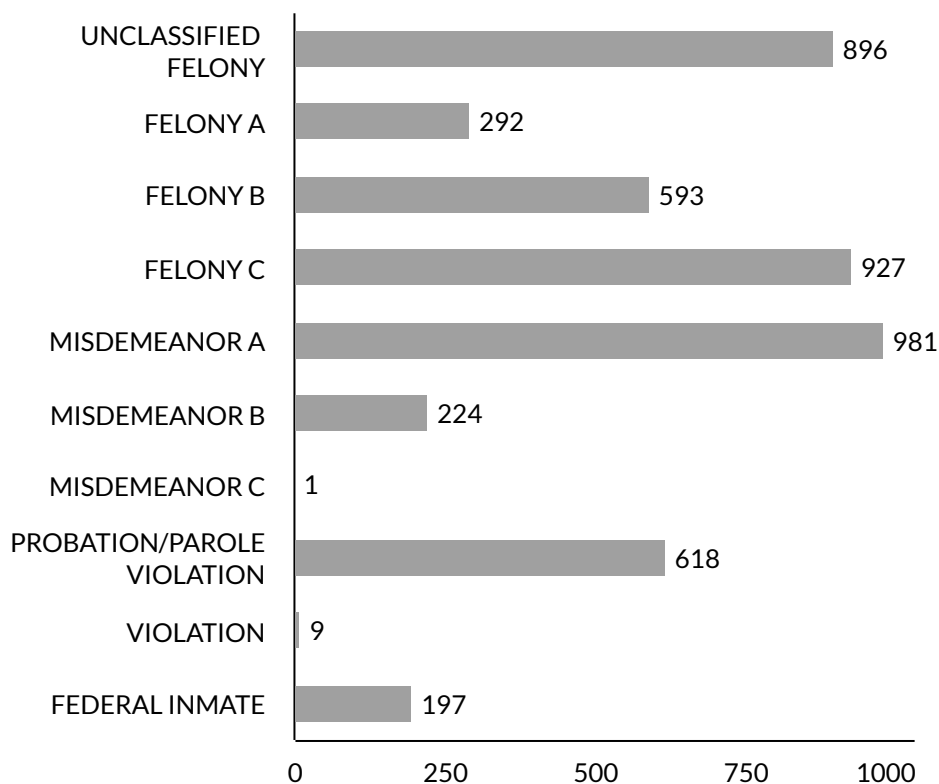




## Counts and Percentages of Offenders in Institutions by Level of Offense: July 1, 2022

Crime Degree Code	Count	Percent
UNCLASSIFIED FELONY	896	18.91%
FELONY A	292	6.16%
FELONY B	593	12.52%
FELONY C	927	19.57%
MISDEMEANOR A	981	20.70%
MISDEMEANOR B	224	4.73%
MISDEMEANOR C	1	0.02%
PROBATION/PAROLE VIOLATION	618	13.04%
VIOLATION	9	0.19%
FEDERAL INMATE	197	4.16%
TOTAL	4,738	100%

## Prison Population by Level of Offense



See Alaska Statute  
11.81.250  
Classification of Offenses  
for information on each of  
these offense levels.





# Counts of Offenders in Institutions by Race/Ethnicity

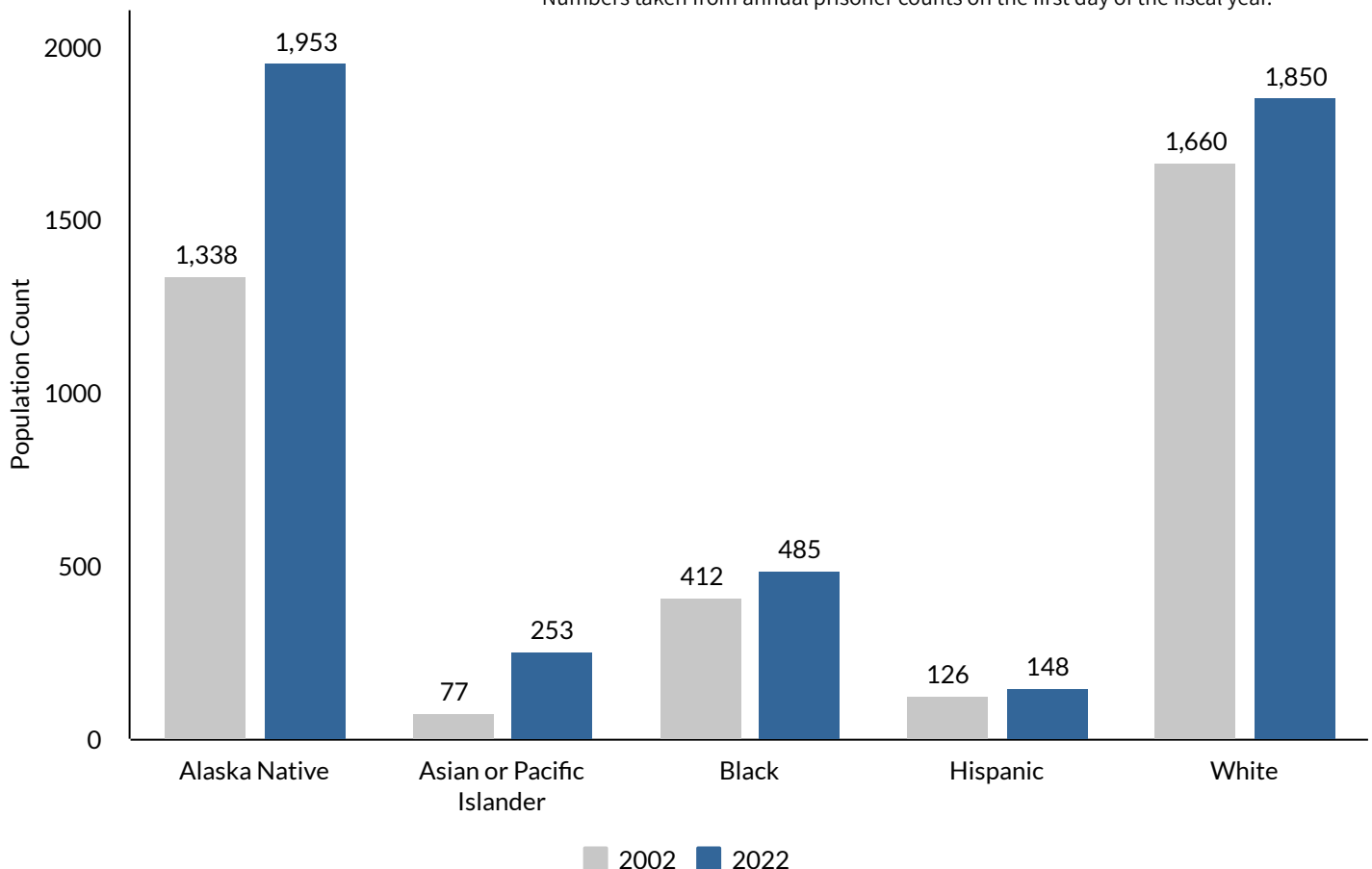
2022 | Research &amp; Analysis

Race	Total Count 7/1/2022	Percent Total
*Alaska Native	1,953	41.22%
Asian or Pacific Islander	253	5.34%
Black	485	10.24%
Hispanic	148	3.12%
Unknown	49	1.03%
White	1,850	39.05%
TOTAL	4,738	100%

\*Alaska Native race category includes a small number of Native Americans not indigenous to Alaska.

## Total Prison Population Growth by Race/Ethnicity Over 20 Years

Numbers taken from annual prisoner counts on the first day of the fiscal year.







# Total Prison Population by Race/Ethnicity and Sex

Inmate Total

**4,738**

Male Total

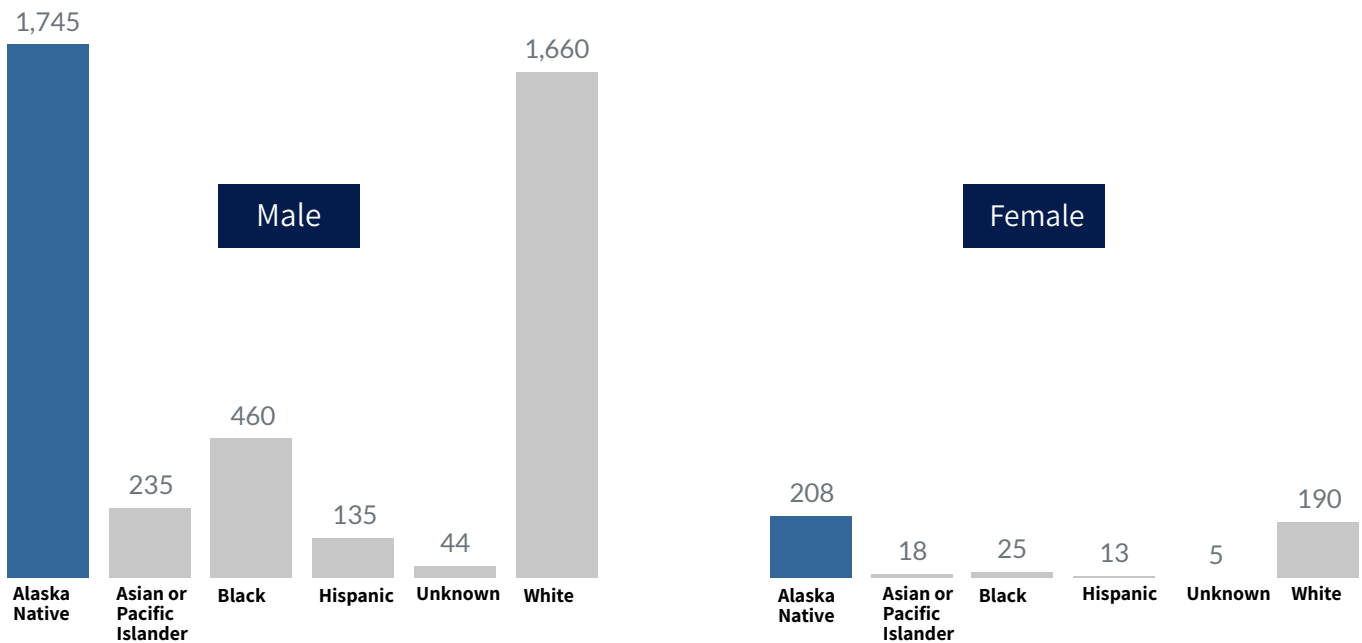
**4,279**

Female Total

**459**

-Population data as of July 1, 2022

-Blue indicates the largest population by Race/Ethnicity



Alaska Population

**733,391**

Male Total;

**384,297**

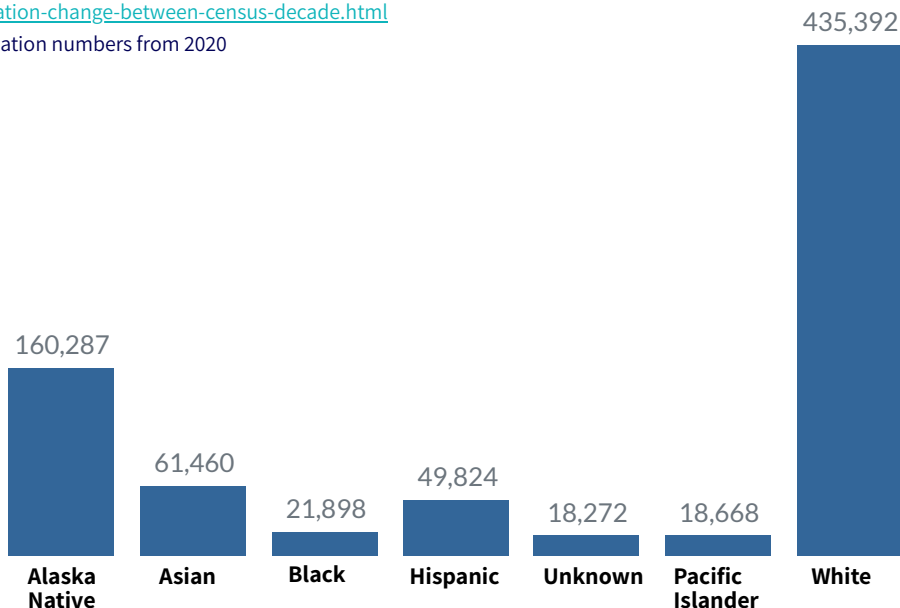
Female Total

**349,094**

## Alaska Population by Race/Ethnicity

-Data Retrieved from <https://www.census.gov/library/stories/state-by-state/alaska-population-change-between-census-decade.html>

-Population numbers from 2020





# State of Alaska Incarceration Rate by Race/Ethnicity

## Incarceration rate of Black Alaskans per 1,000

July 1, 2021 to June 30, 2022. AK Population Source: US Census Bureau



74 out of every 1,000 black Alaskans were incarcerated for at least one day during FY22.

## Incarceration rate of Alaska Natives per 1,000



## Incarceration rate of white Alaskans per 1,000



## Incarceration rate of Asian or Pacific Islander Alaskans per 1,000



## Incarceration rate of Hispanic Alaskans per 1,000







INSTITUTIONS

# 2022 Alaska DOC Institution Contact List

2022 | Administration



**Anchorage  
Correctional  
Complex**

**907-269-4100**

1400 E. 4th Avenue  
Anchorage, AK 99501

Superintendent  
Arnaldo Hernandez



**Anvil  
Mountain  
Correctional  
Center**

**907-443-2241**

1810 Center Creek Road  
Nome, AK 99762

Superintendent  
Sandra Martinson



**Fairbanks  
Correctional  
Complex**

**907-458-6700**

1931 Eagan Avenue  
Fairbanks, AK 99701

Superintendent  
Rob Jeffords



**Goose Creek  
Correctional  
Center**

**907-864-8134**

22301 W. Alsop Road  
Wasilla, AK 99654

Superintendent  
Earl Houser



**Hiland  
Mountain  
Correctional  
Center**

**907-694-9511**

9101 Hesterberg Road  
Eagle River, AK 99577

Superintendent  
Brandon Jones



**Ketchikan  
Correctional  
Center**

**907-228-7350**

1201 Schoenbar Road  
Ketchikan, AK 99901

Superintendent  
Jessica Mathews



**Lemon Creek  
Correctional  
Center**

**907-465-6200**

2000 Lemon Creek Rd.  
Juneau, AK 99801

Superintendent  
Bob Cordle

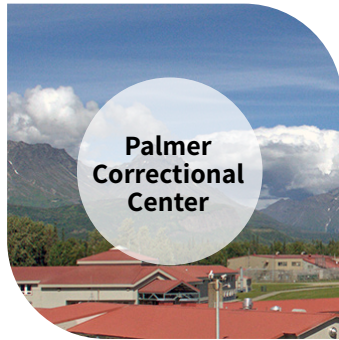


**Mat-Su  
Pretrial  
Facility**

**907-745-0943**

339 E Dogwood Road  
Palmer, AK 99645

Superintendent  
Sheri Olsen



**Palmer  
Correctional  
Center**

**907-745-5054**

P.O. Box 919  
Palmer, AK 99645

Superintendent  
Jason Hamilton



**Pt. Mackenzie  
Correctional  
Farm**

**907-376-8976**

P.O. Box 877730  
Wasilla, AK 99687

Acting Superintendent  
Pasha Oliver



**Spring Creek  
Correctional  
Center**

**907-224-8200**

3600 Bette Cato  
Seward, AK 99664

Superintendent  
James Milburn



**Wildwood  
Correctional  
Complex**

**907-260-7200**

10 Chugach Avenue  
Kenai, AK 99611

Superintendent  
Lynnie Einerson



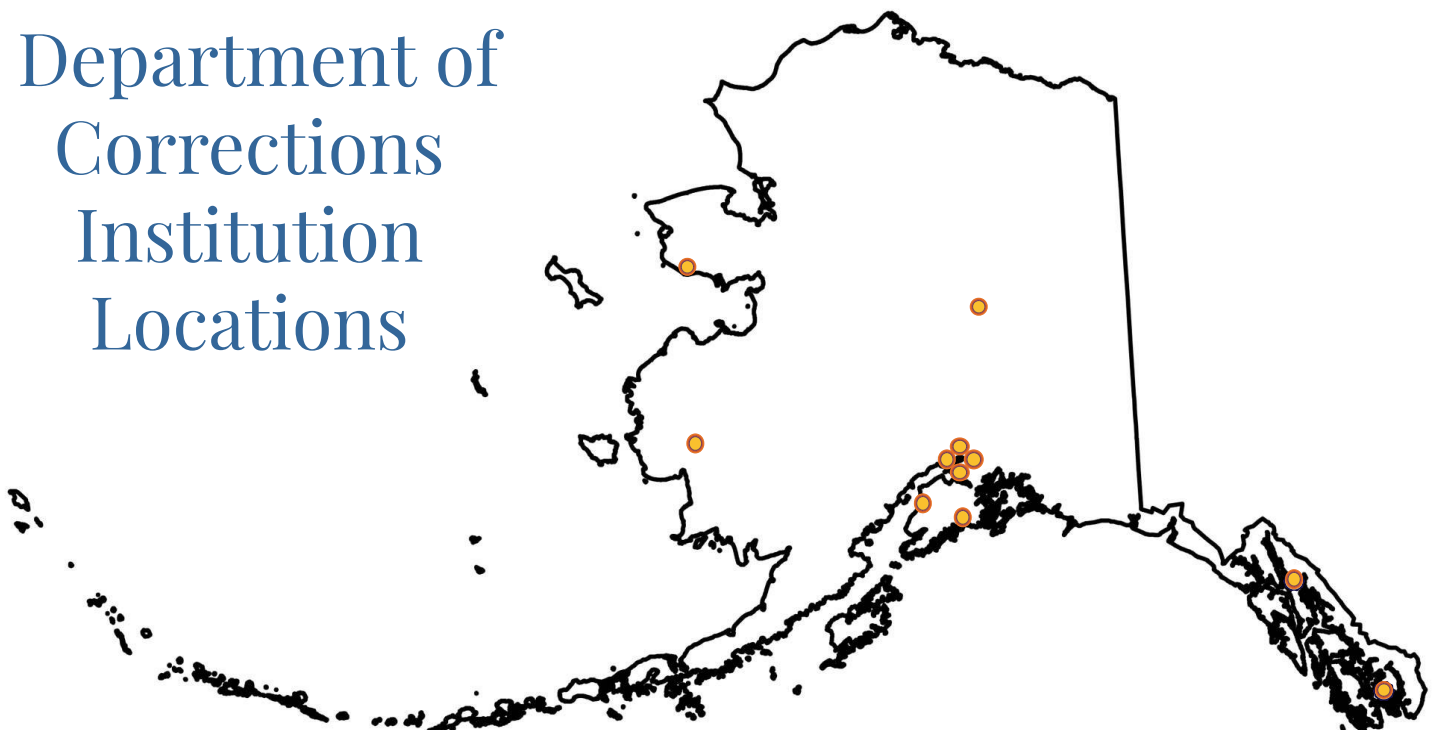
**Yukon-  
Kuskokwim  
Correctional  
Center**

**907-543-5245**

1000 Chief Eddie Hoffman Hwy  
Bethel, AK 99559

Superintendent  
Demetrios Kargas

## Department of Corrections Institution Locations



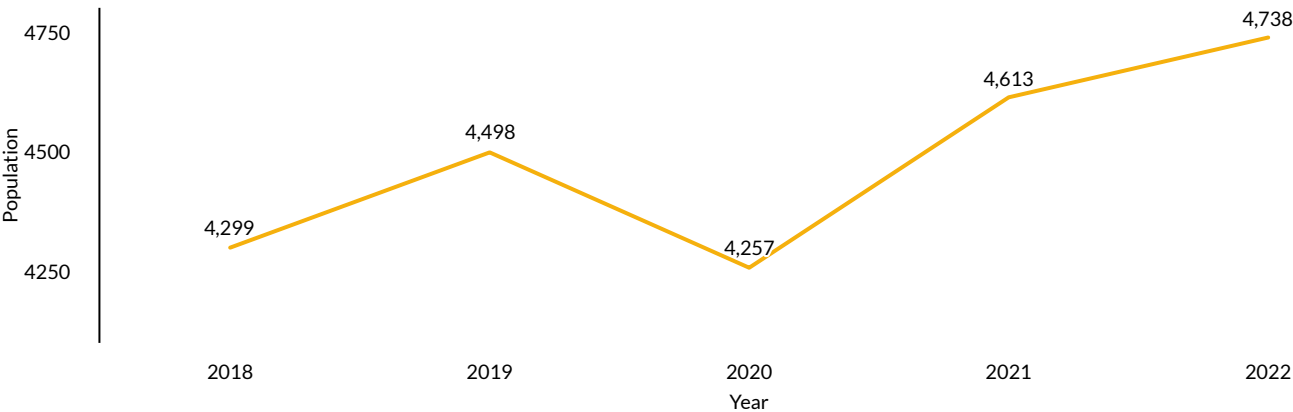


INSTITUTIONS

# Offenders in Alaska Institutions by Age and Sex

2022 | DOC Research & Analysis

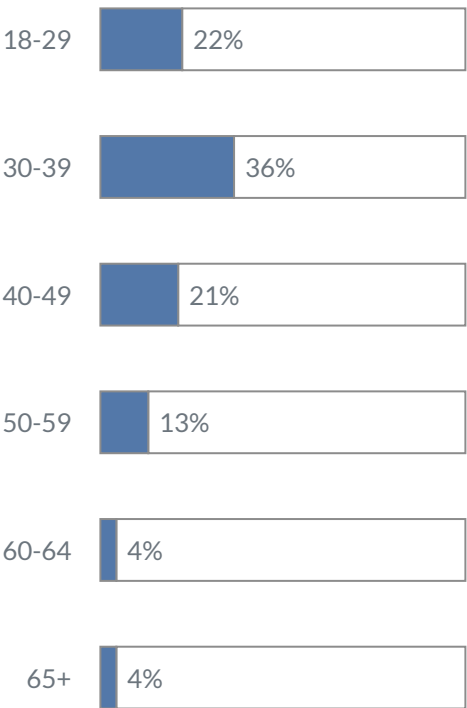
Annual Institution Total Population Count



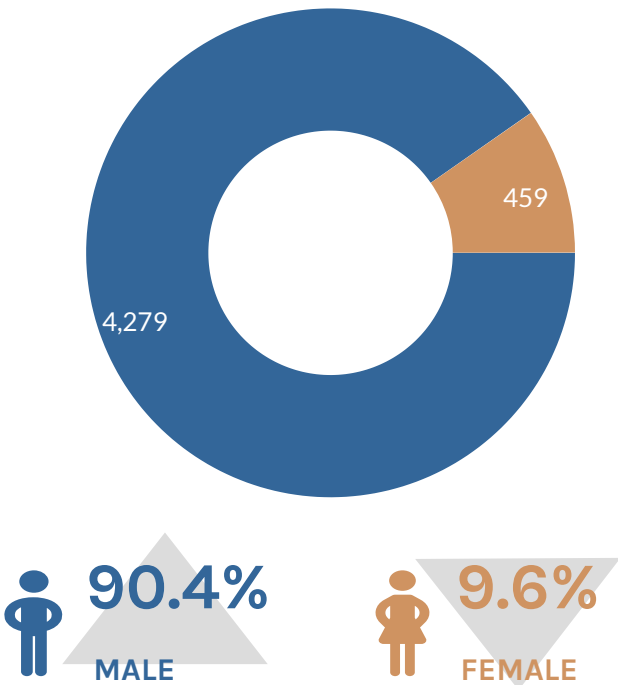
Count taken on July 1, 2022. This total count includes out-of-state offenders in institutions.

## State of Alaska Inmate Population

### Total By Age



### By Sex

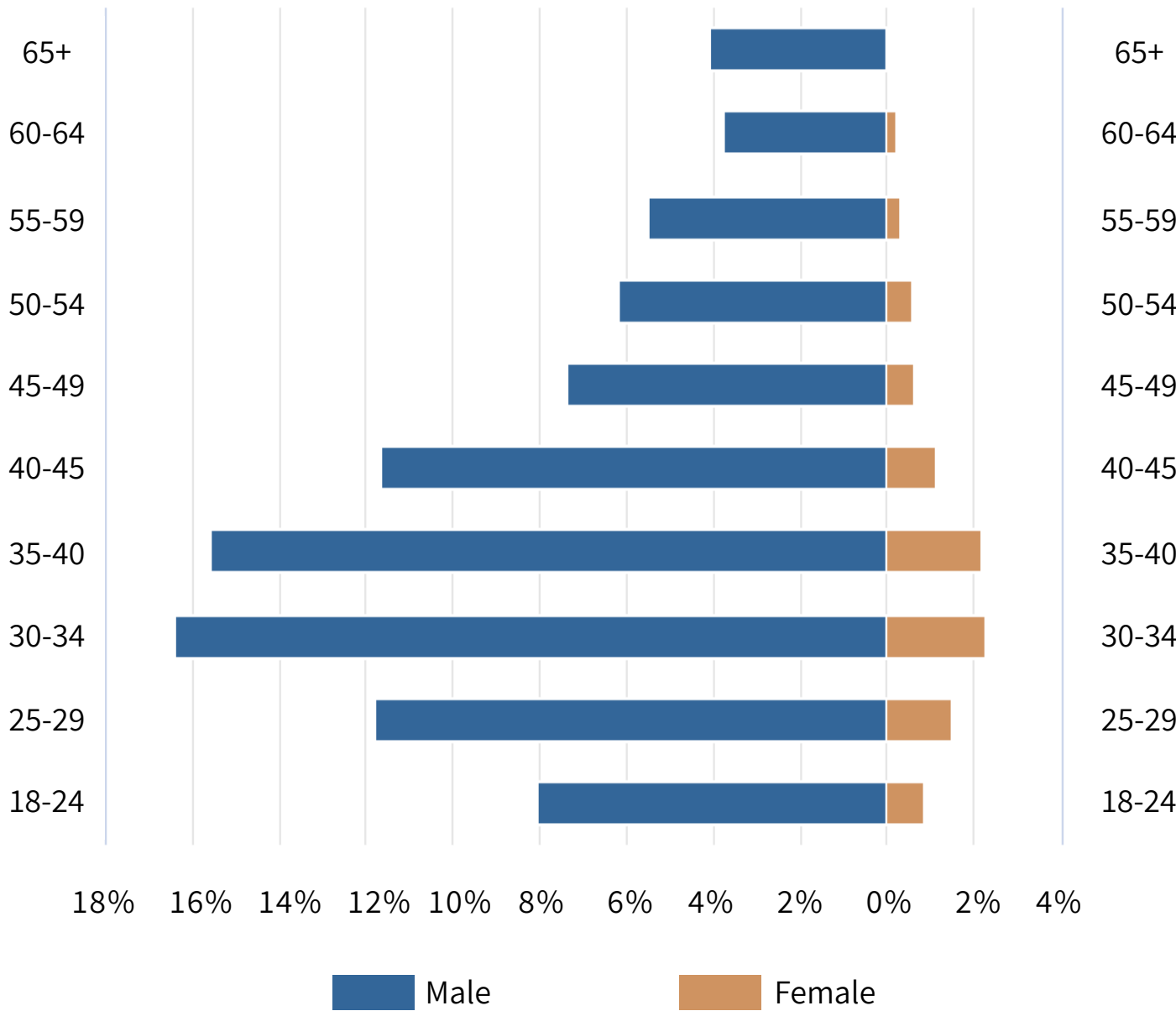


The inmate population ratio of males to females changed by 2% between 2021 & 2022.





# Offenders in Alaska Institutions by Age and Sex On July 1, 2022



This total count includes out-of-state offenders in institutions.

Age Group	Females	Percent of Female Population	Males	Percent of Male Population
18-29	110	23.97%	940	21.97%
30-39	211	45.97%	1,513	35.36%
40-49	84	18.30%	901	21.06%
50-59	41	8.93%	553	12.92%
60 AND OVER	13	2.83%	372	8.69%



## Number of In-State Offenders in Institutions on July 1, 2018 - 2022

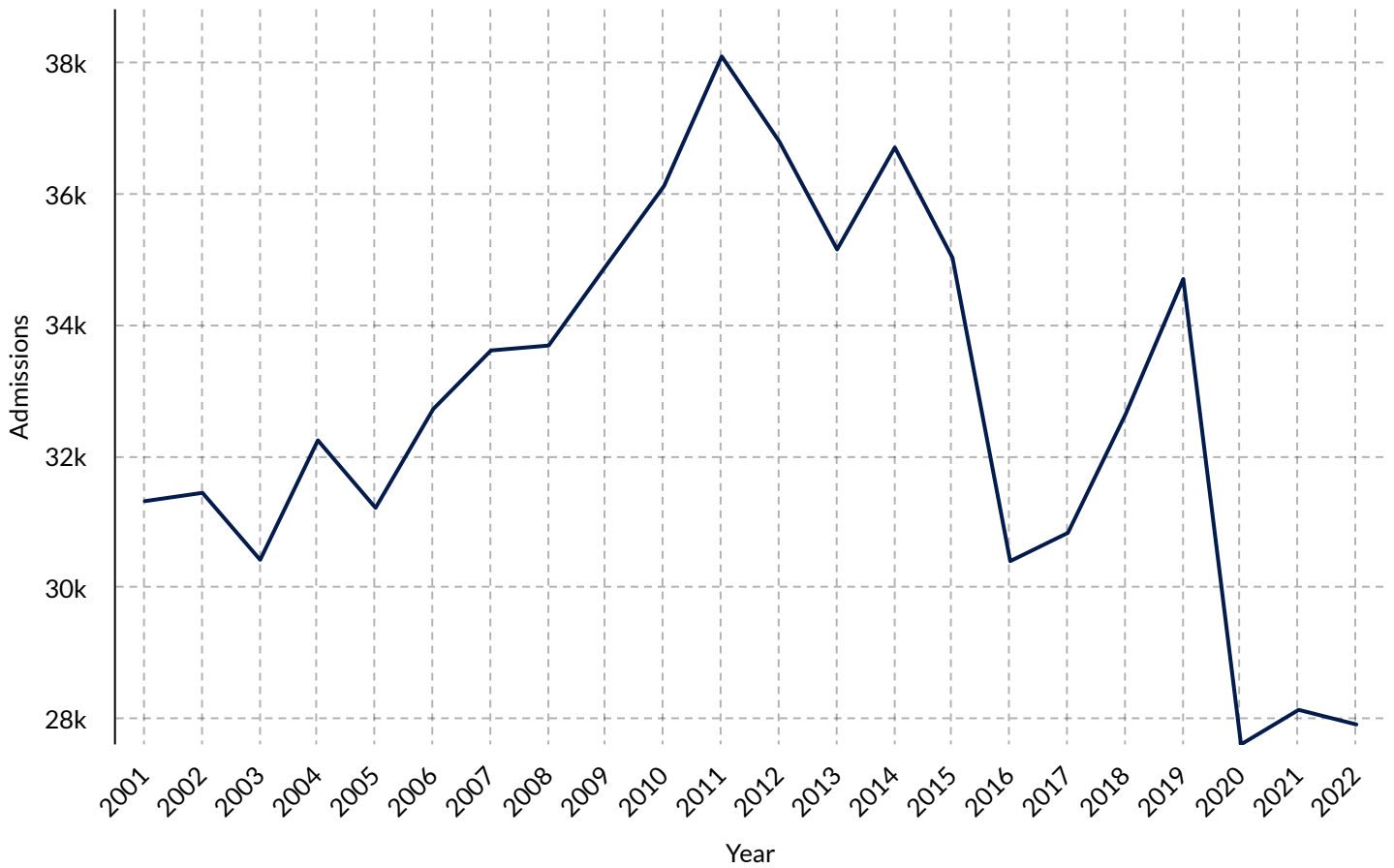
Institutions	2018	2019	2020	2021	2022
ANCHORAGE CC	857	825	797	886	918
ANVIL MTN CC	135	136	136	136	123
FAIRBANKS CC	242	280	268	290	253
GOOSE CREEK CC	1,281	1,352	1,216	1,344	1,325
HILAND MTN CC	335	300	272	351	328
KETCHIKAN CC	48	49	57	52	70
LEMON CREEK CC	223	245	215	223	222
MATSU PRETRIAL	74	93	93	87	92
PALMER CC	0	0	0	0	299
PT. MACKENZIE CF	108	103	59	86	58
SPRING CREEK CC	419	475	517	504	342
WILDWOOD CC	321	310	307	298	333
WILDWOOD PRETRIAL	86	115	106	124	137
YUKON-KISKOKWIM CC	153	199	197	216	227

## Number of Out-of-State Offenders in Institutions on July 1, 2018 - 2022

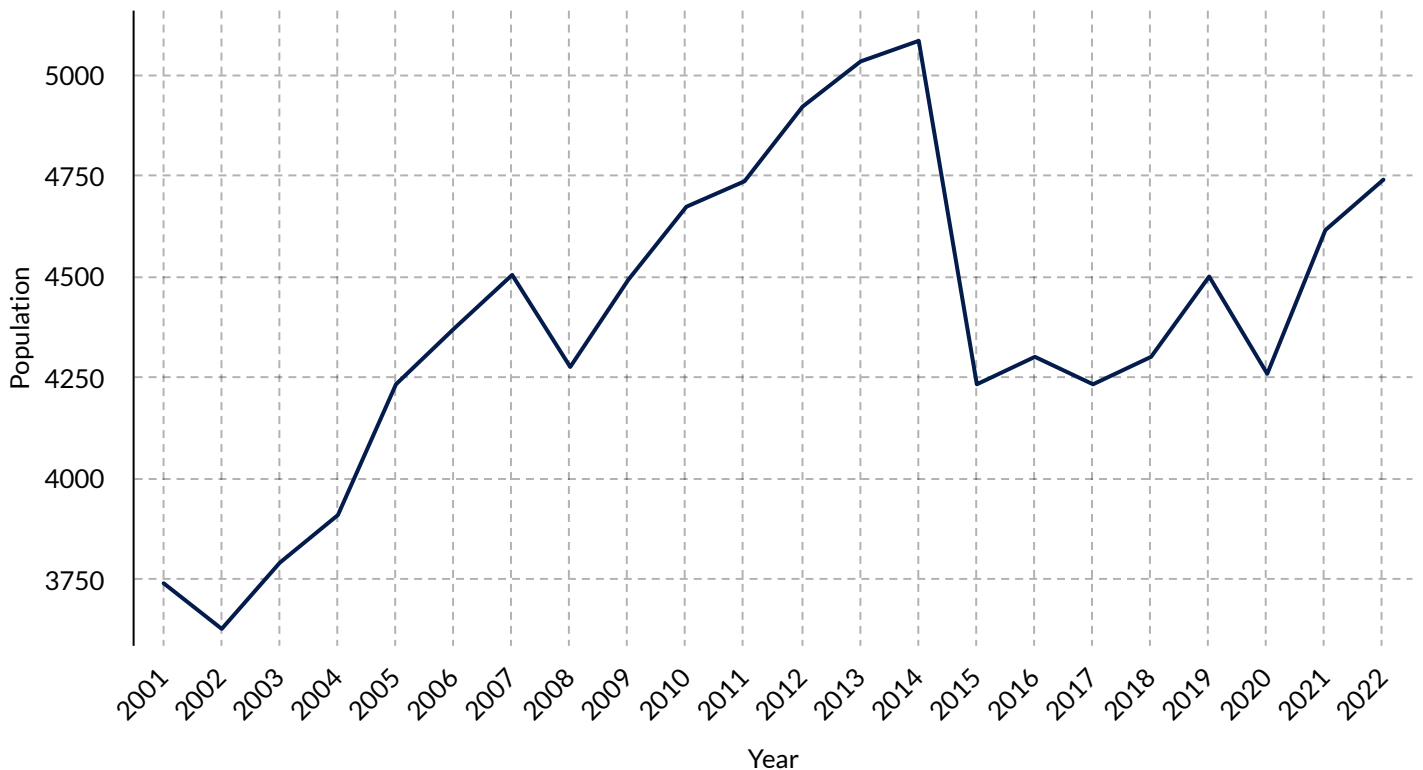
Institutions	2018	2019	2020	2021	2022
CALIFORNIA	0	0	1	1	0
COLORADO STATE PRISON	4	4	3	2	2
FEDERAL BUREAU PRISONS	12	9	9	8	7
INDIANA STATE PRISON	0	0	1	1	1
NORTH DAKOTA	0	0	0	4	0
WASHINGTON STATE	1	3	3	0	1



## 21st Century Total Admissions by Year



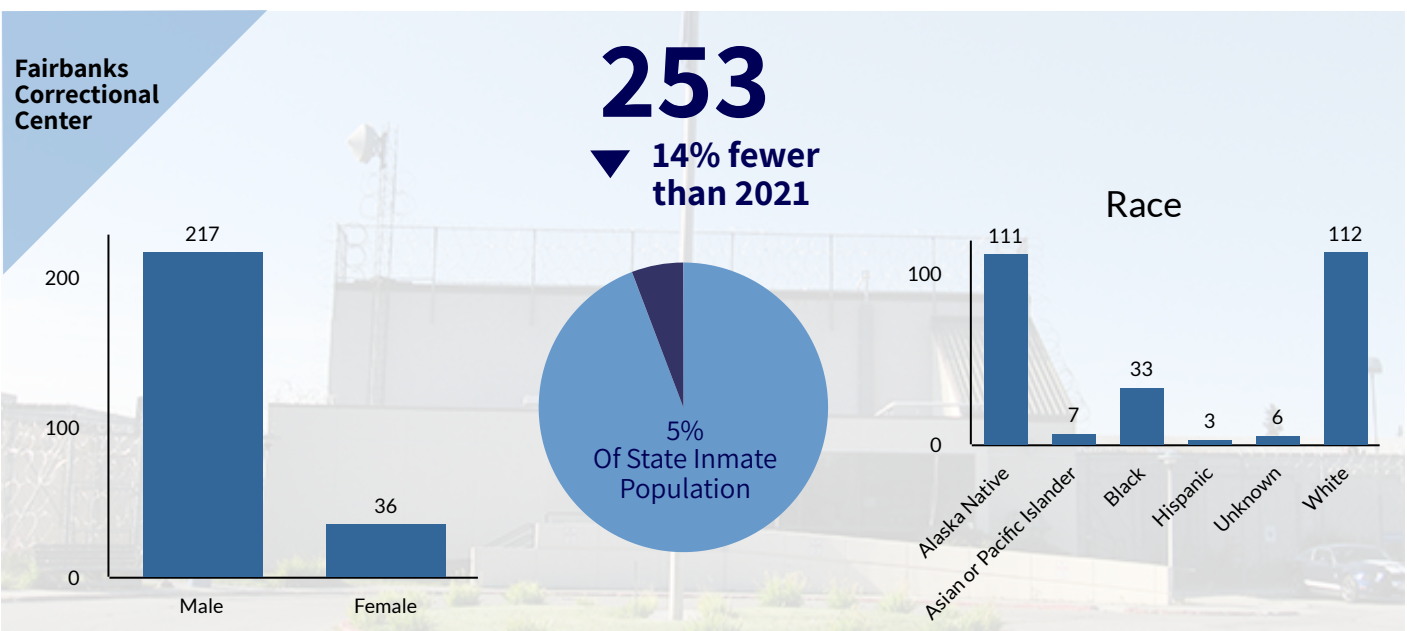
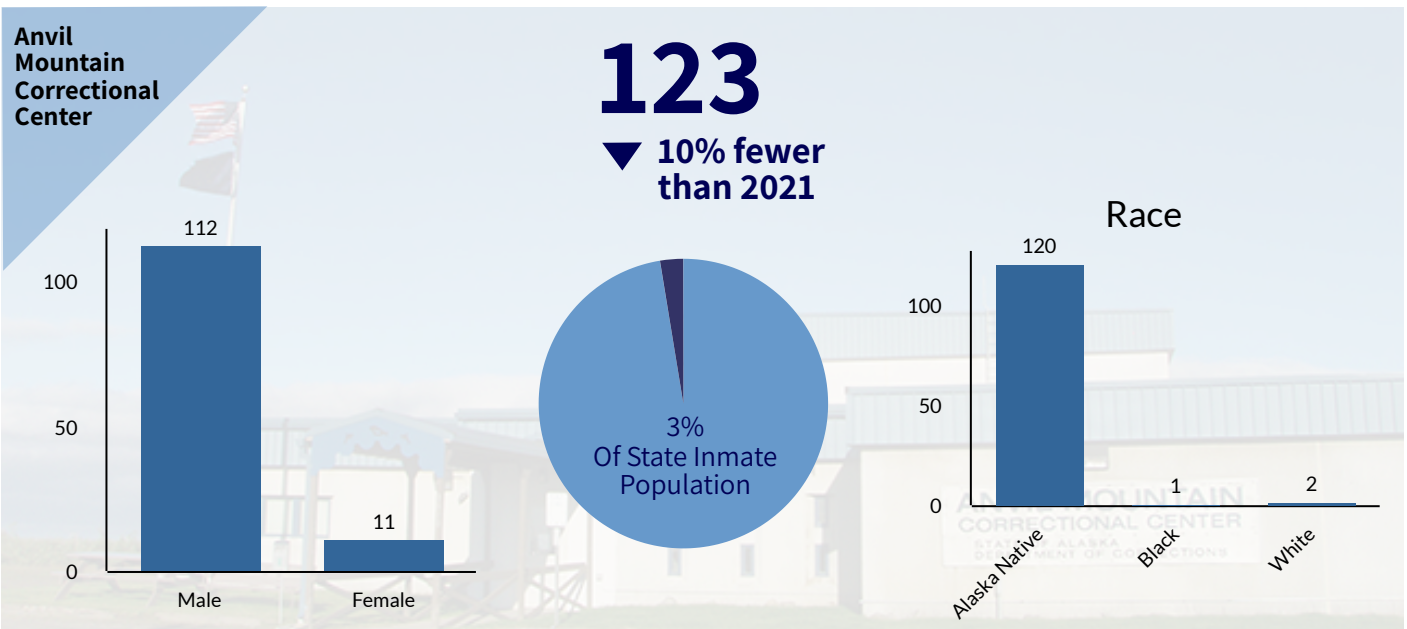
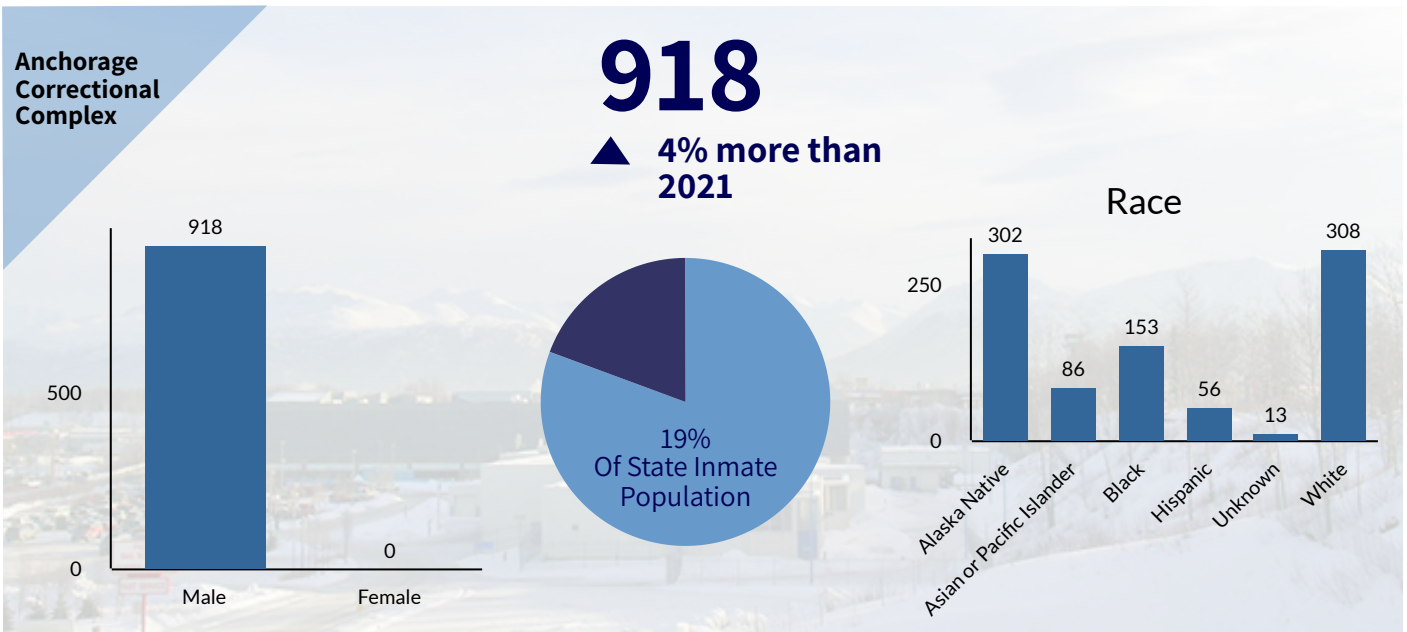
## 21st Century Annual Population Count



The total population count of inmates in all facilities is taken from a specific day each year for this report. The annual count was taken on December 31 prior to 2012. Starting in 2013, each annual count has been done at the change of the fiscal year on either June 30 or July 1.



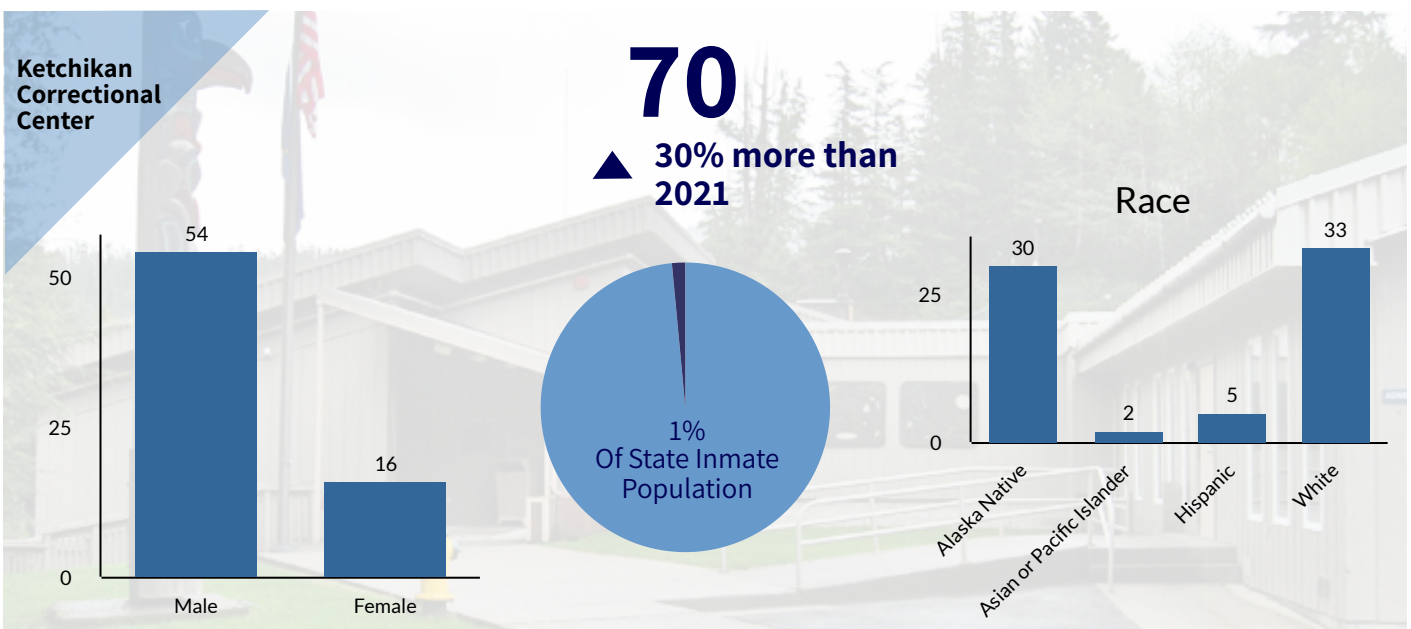
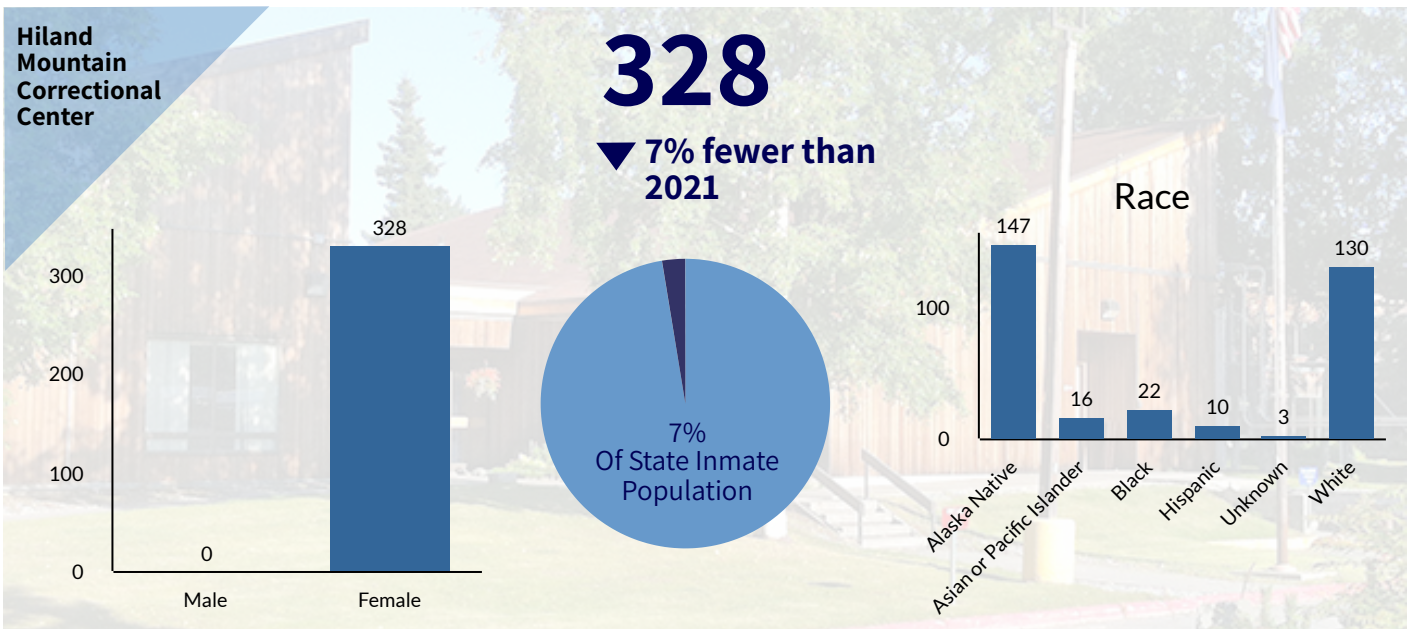
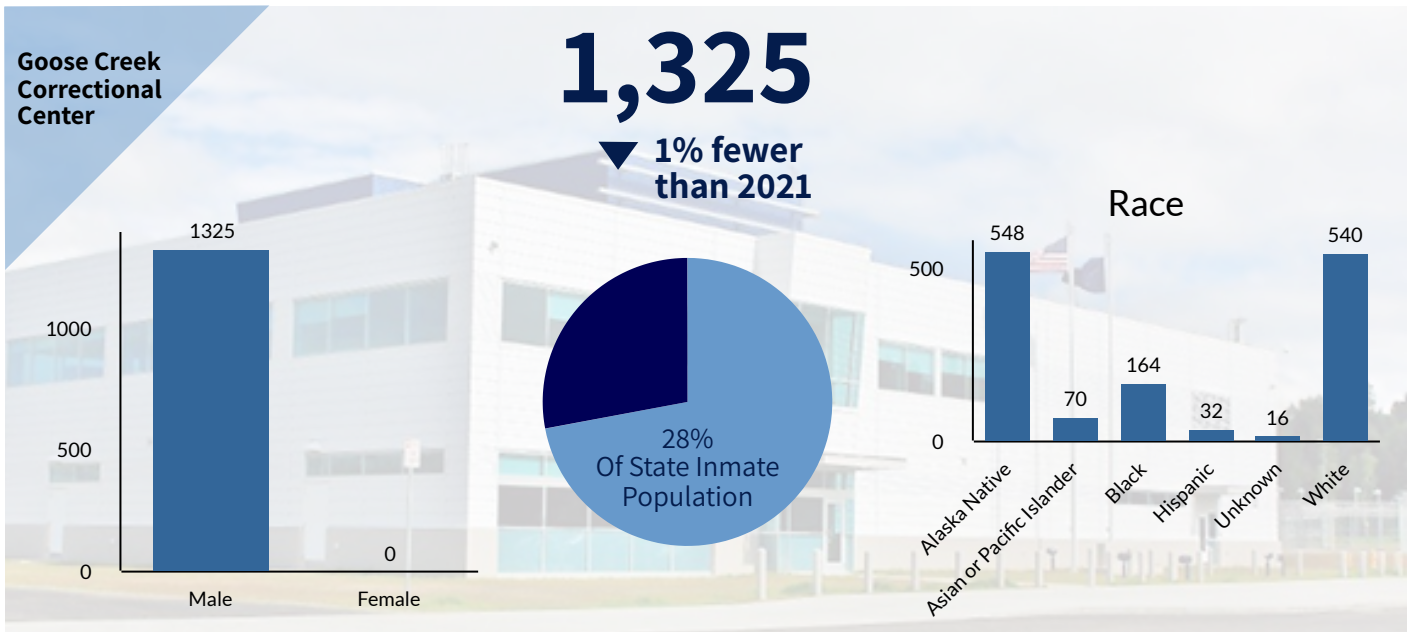
# Number of Offenders in Institutions on July 1, 2022





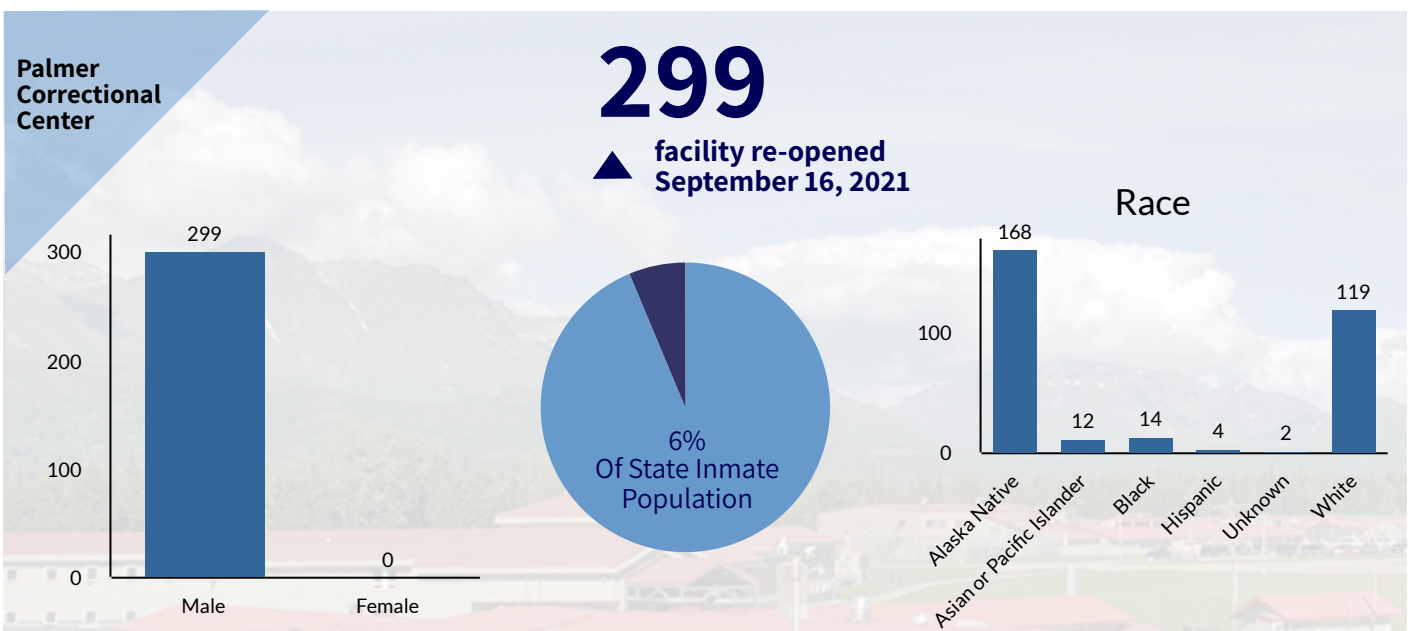
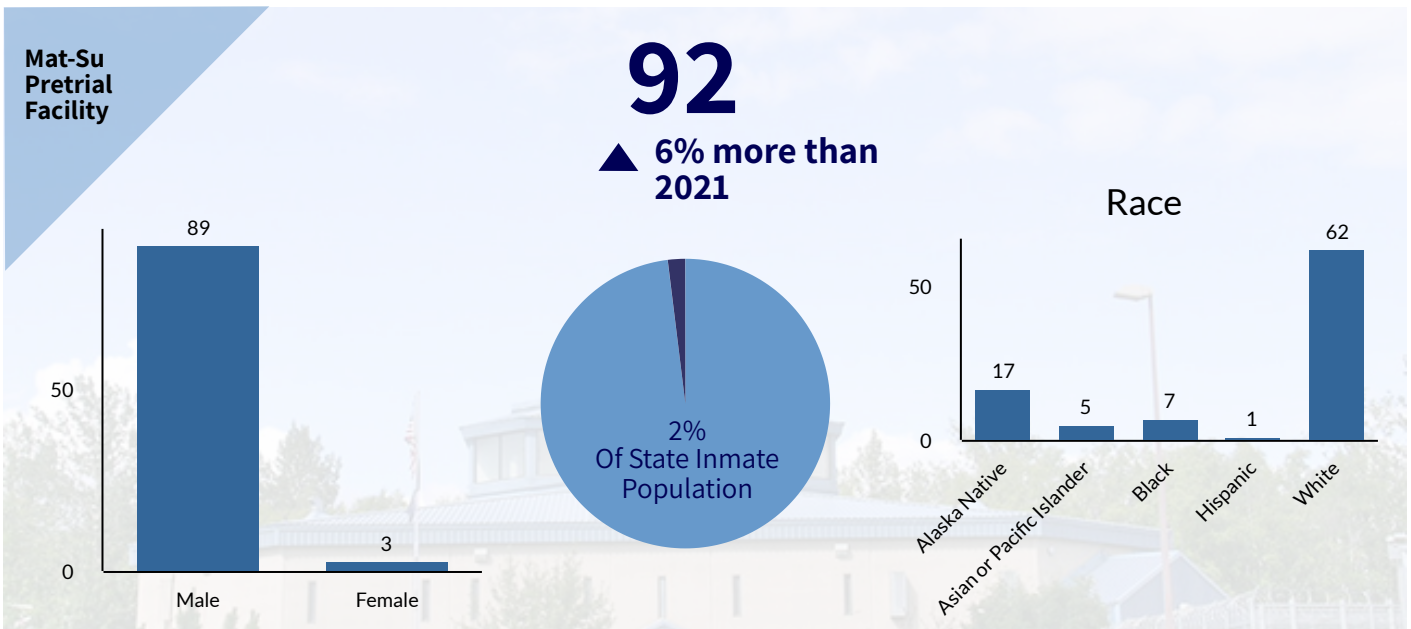
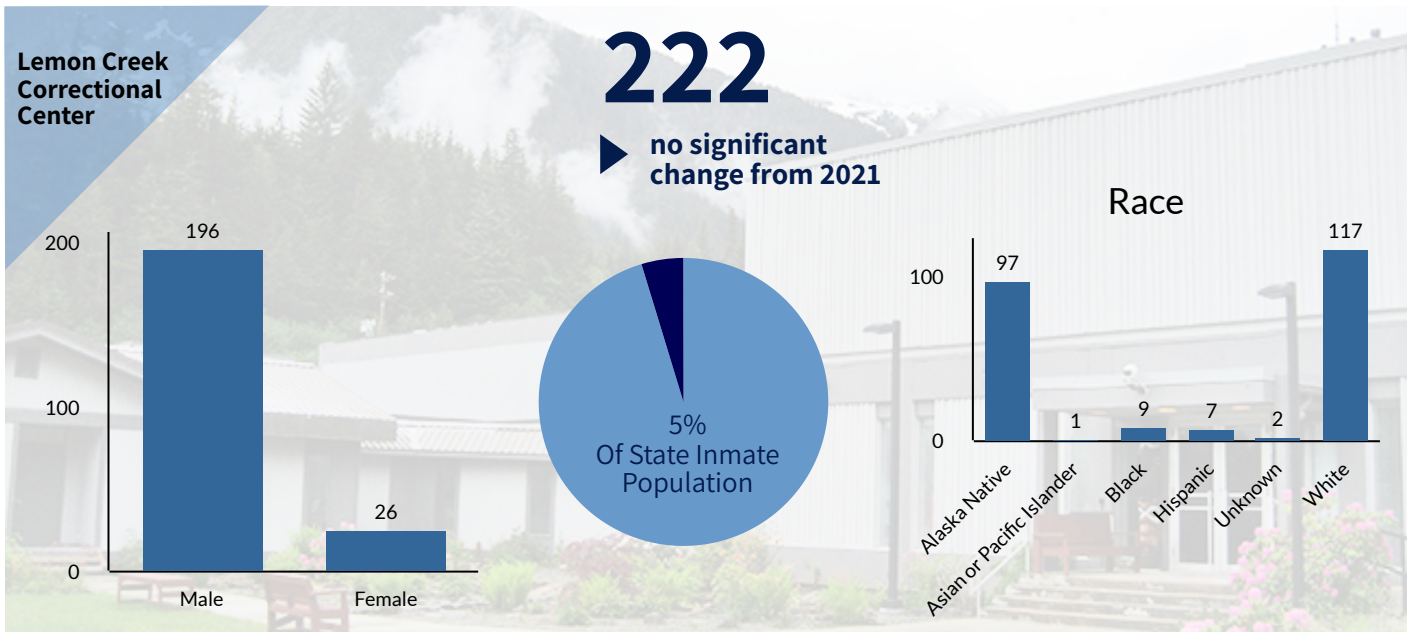


# Number of Offenders in Institutions on July 1, 2022





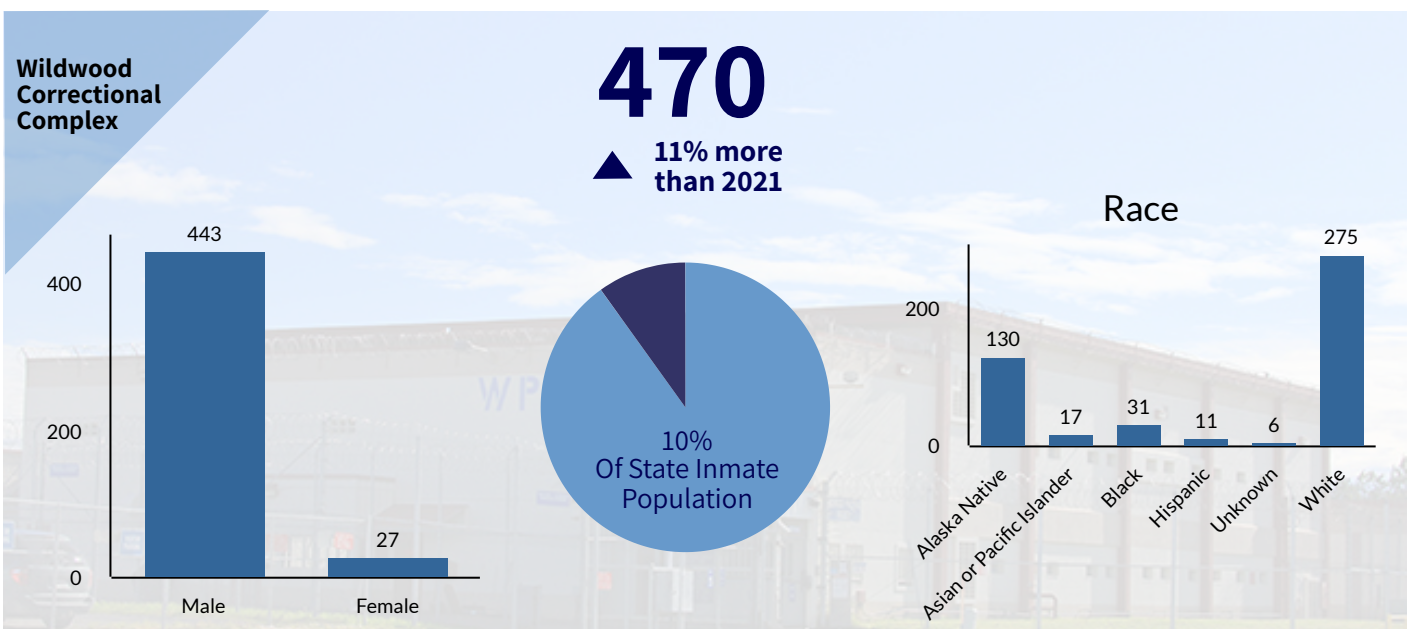
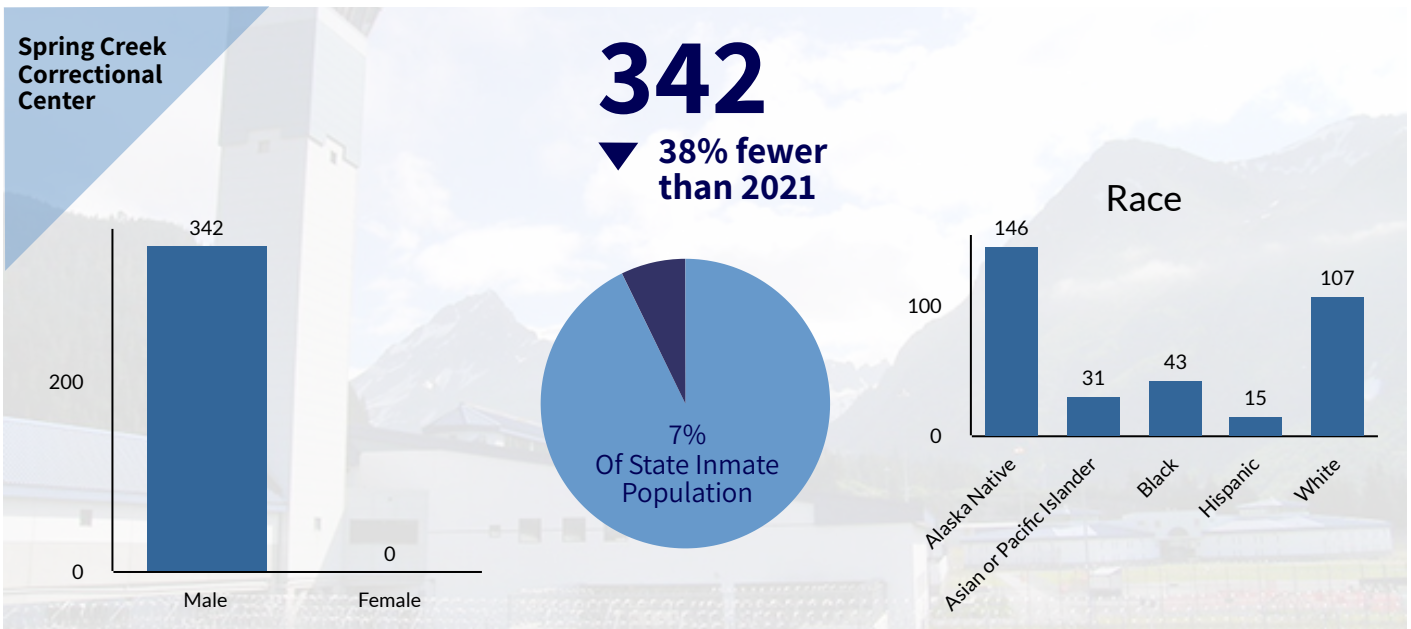
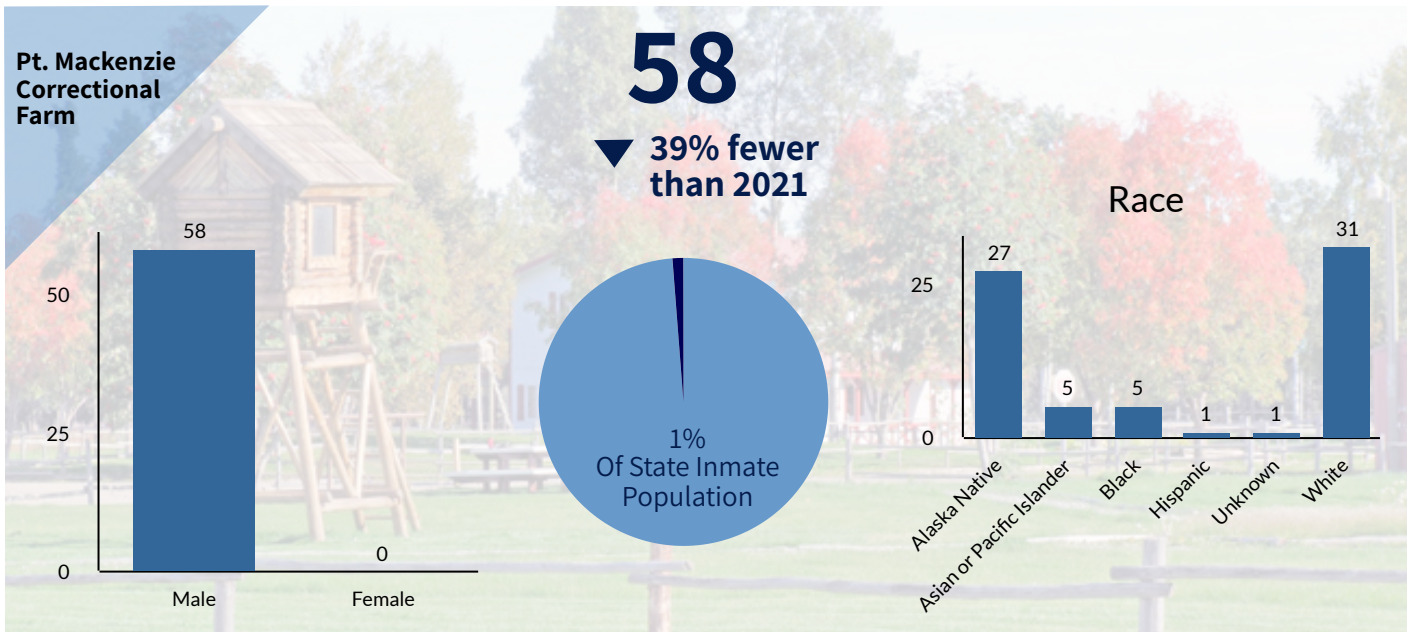
# Number of Offenders in Institutions on July 1, 2022





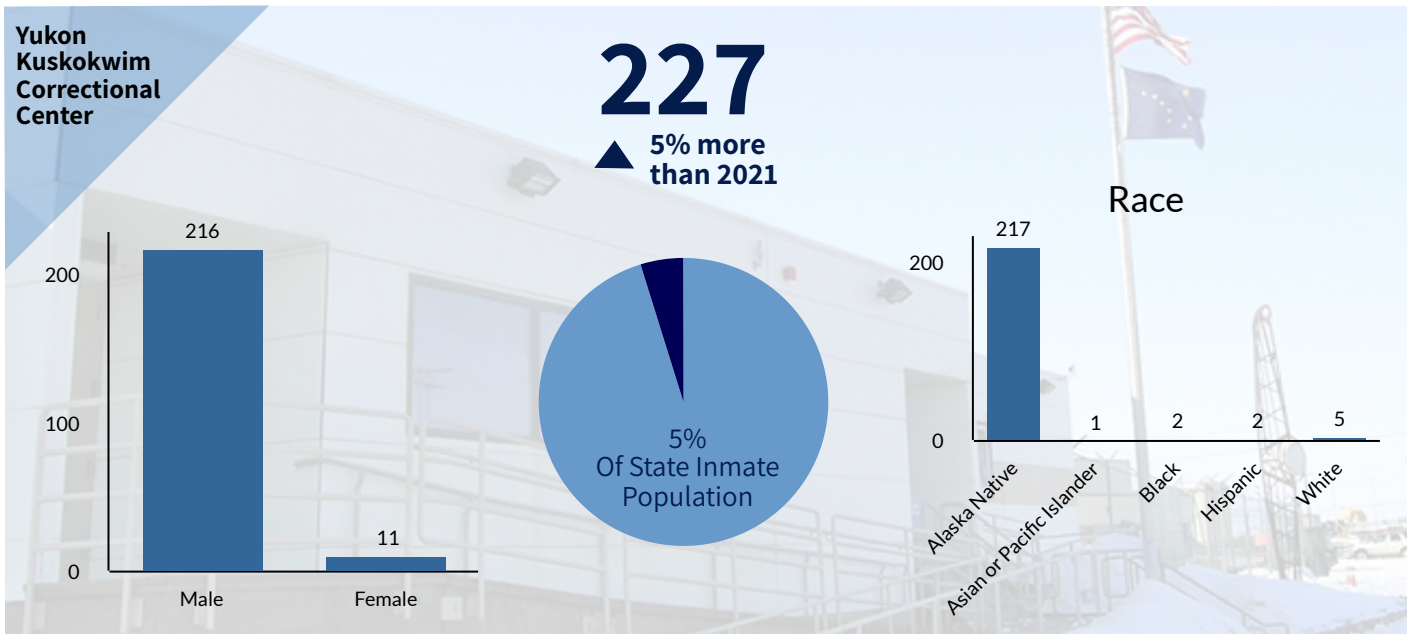


# Number of Offenders in Institutions on July 1, 2022

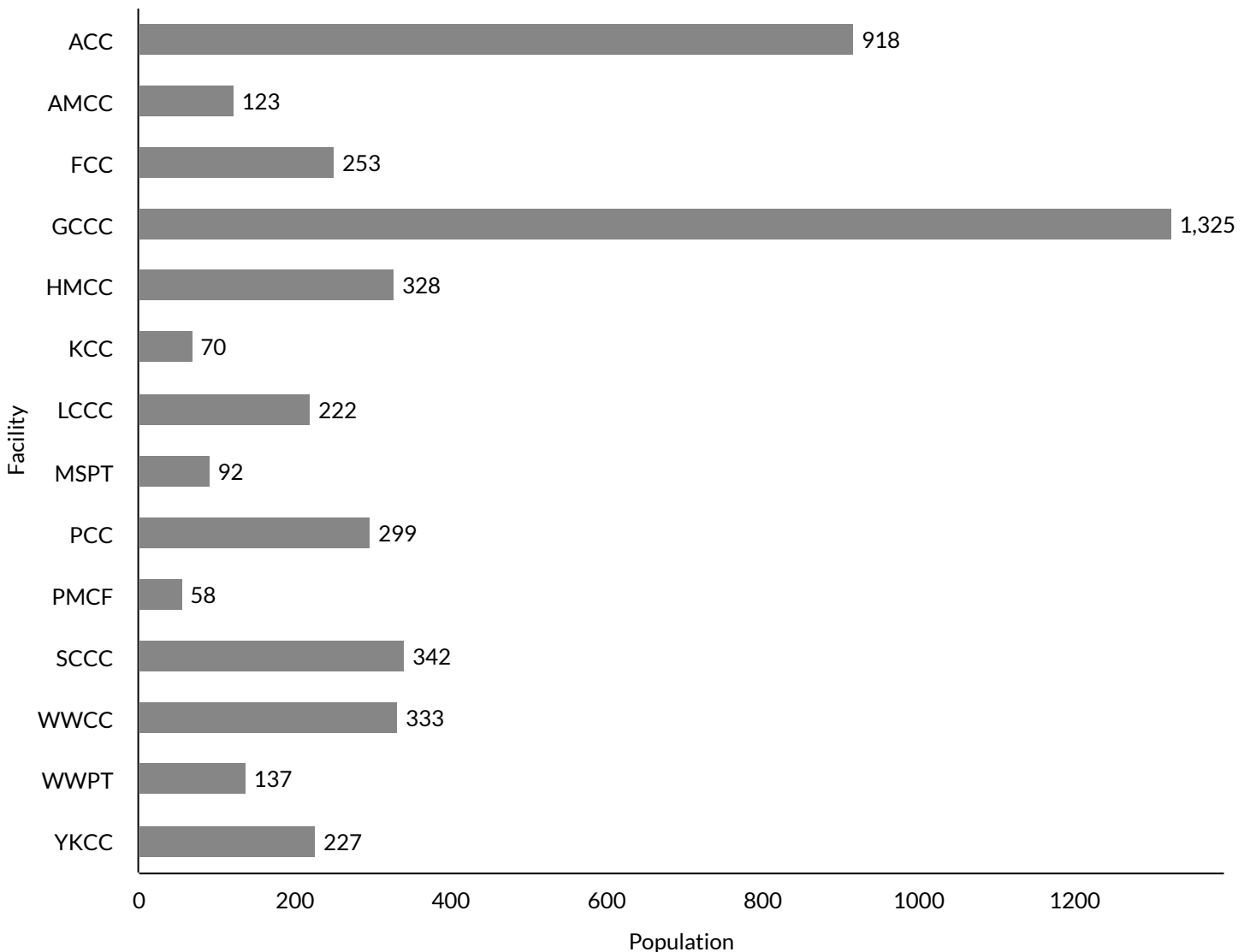




# Number of Offenders in Institutions on July 1, 2022



## Offender Counts by Location on July 1, 2022





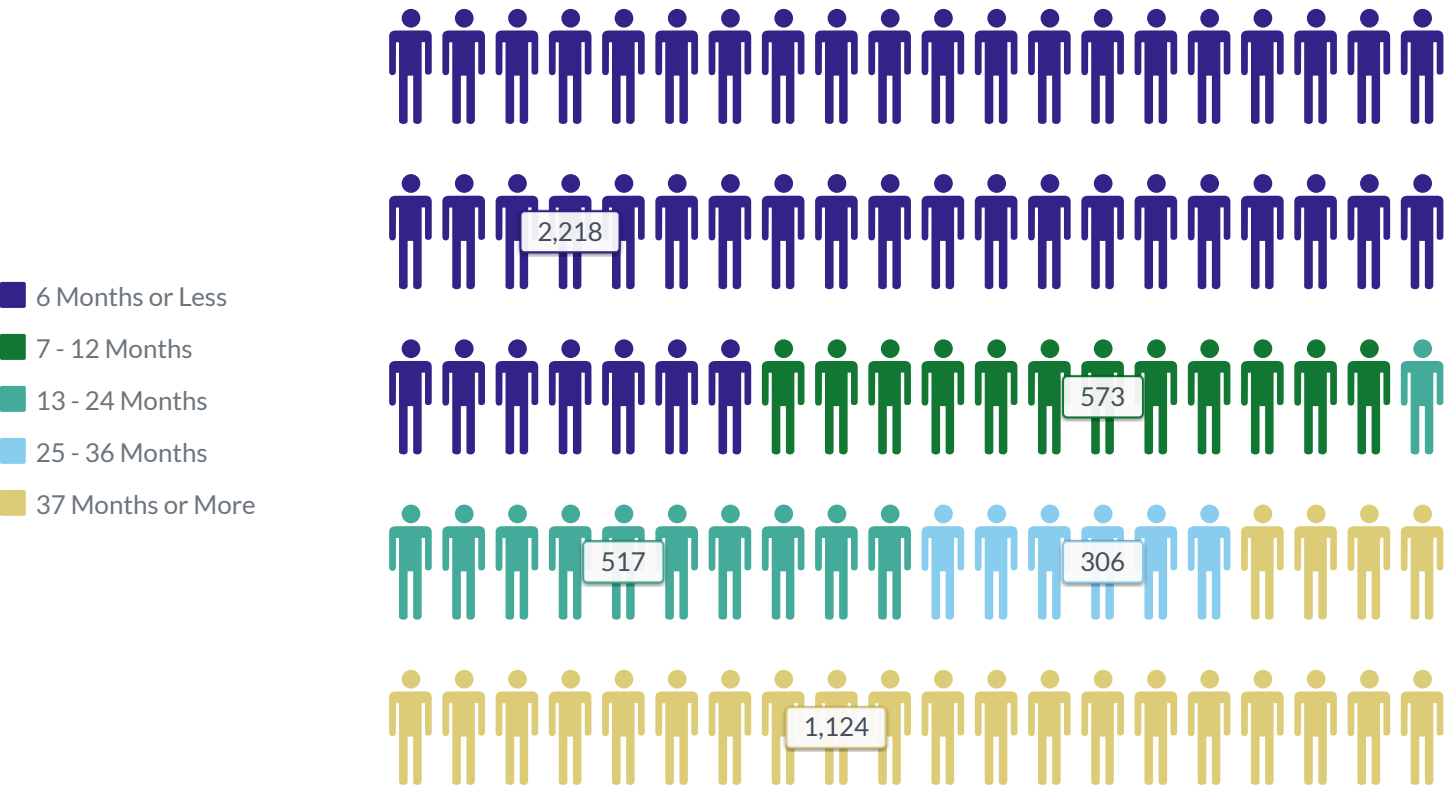


INSTITUTIONS

Counts and Percentages of Offenders in Institutions by Length of Time From Admission: July 1, 2022

Months In	Females	% of Females	Males	% of Males	Total	% of Total
6 MONTHS OR LESS	338	73.63%	1,880	43.93%	2,218	46.81%
7 MONTHS - 12 MONTHS	38	8.27%	535	12.50%	573	12.10%
13 MONTHS - 24 MONTHS	31	6.75%	486	11.35%	517	10.91%
25 MONTHS - 36 MONTHS	17	3.70%	289	6.75%	306	6.46%
37 MONTHS OR MORE	35	7.62%	1,089	25.45%	1,124	23.72%
TOTAL	459	100.00%	4,279	100.00%	4,738	100.00%

Counts and Percentages of Offenders in Institutions by Length of Time From Admission: July 1, 2022



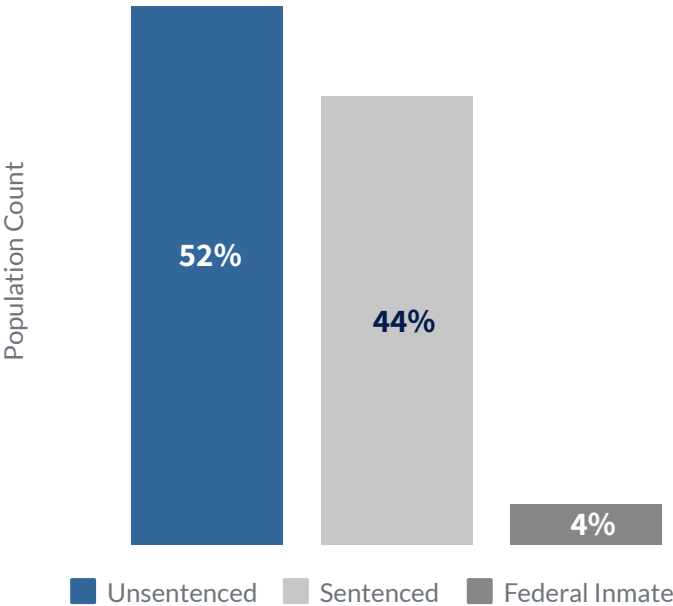


INSTITUTIONS

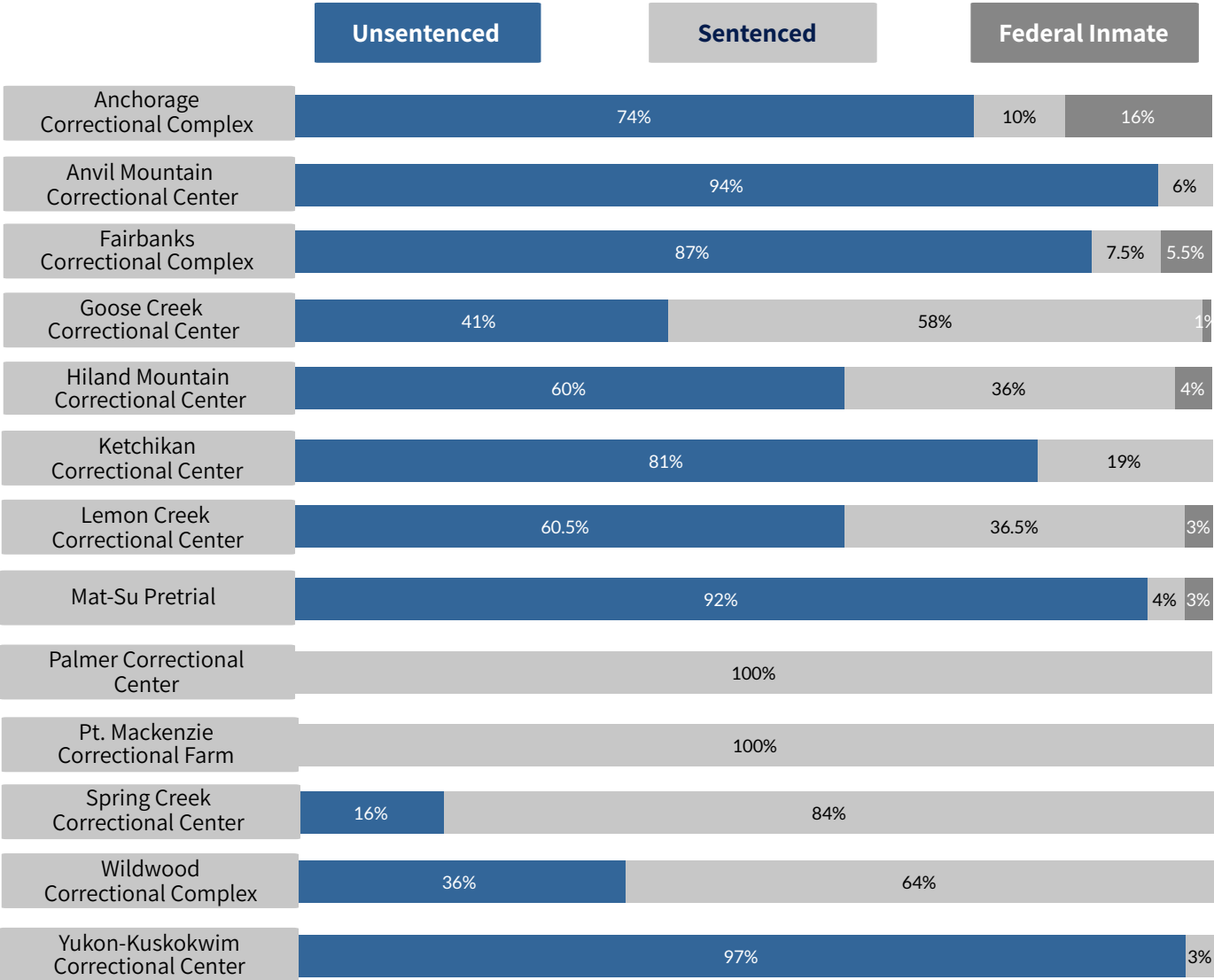
Total In State Population Count by Legal Status on July 1, 2022

Over 50% of the Alaska inmate population remained unsentenced during 2022.

Legal Status	In State Count
Unsentenced	2,477
Sentenced	2,064
Federal Inmate	197
Total	4,738



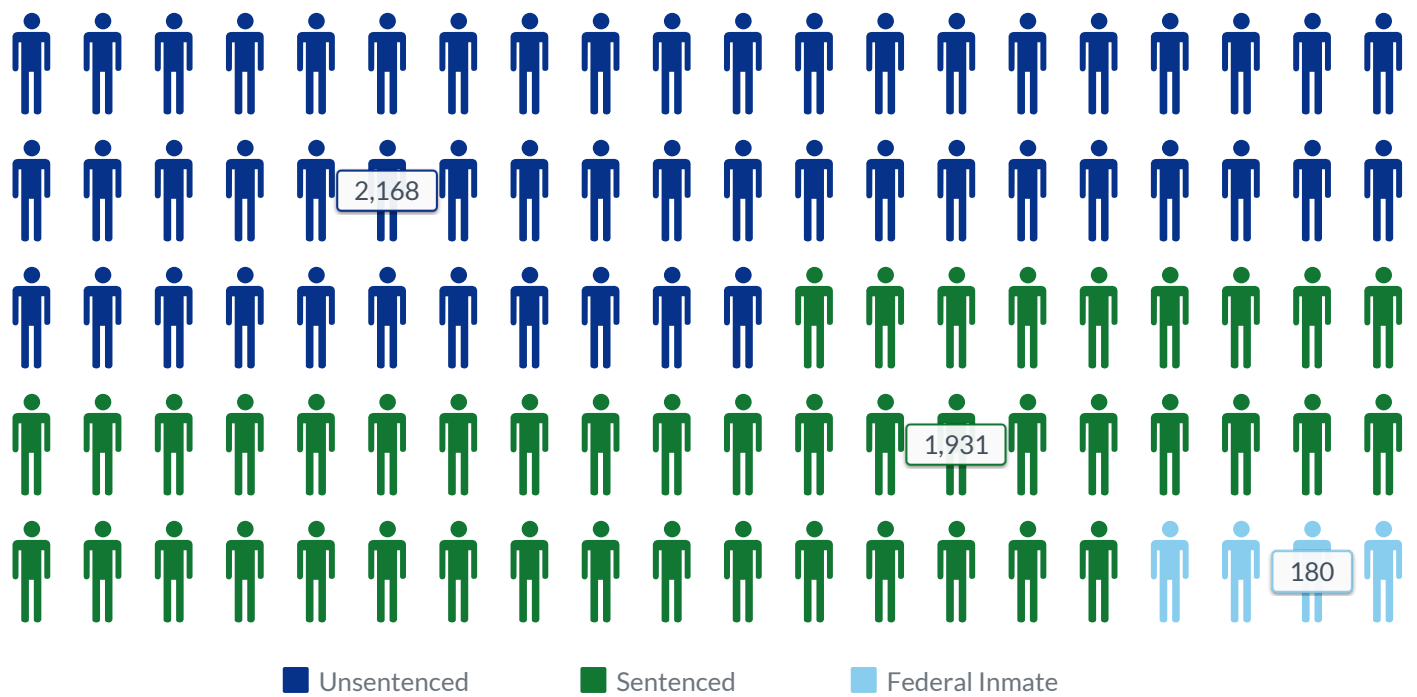
Facility Population by Legal Status



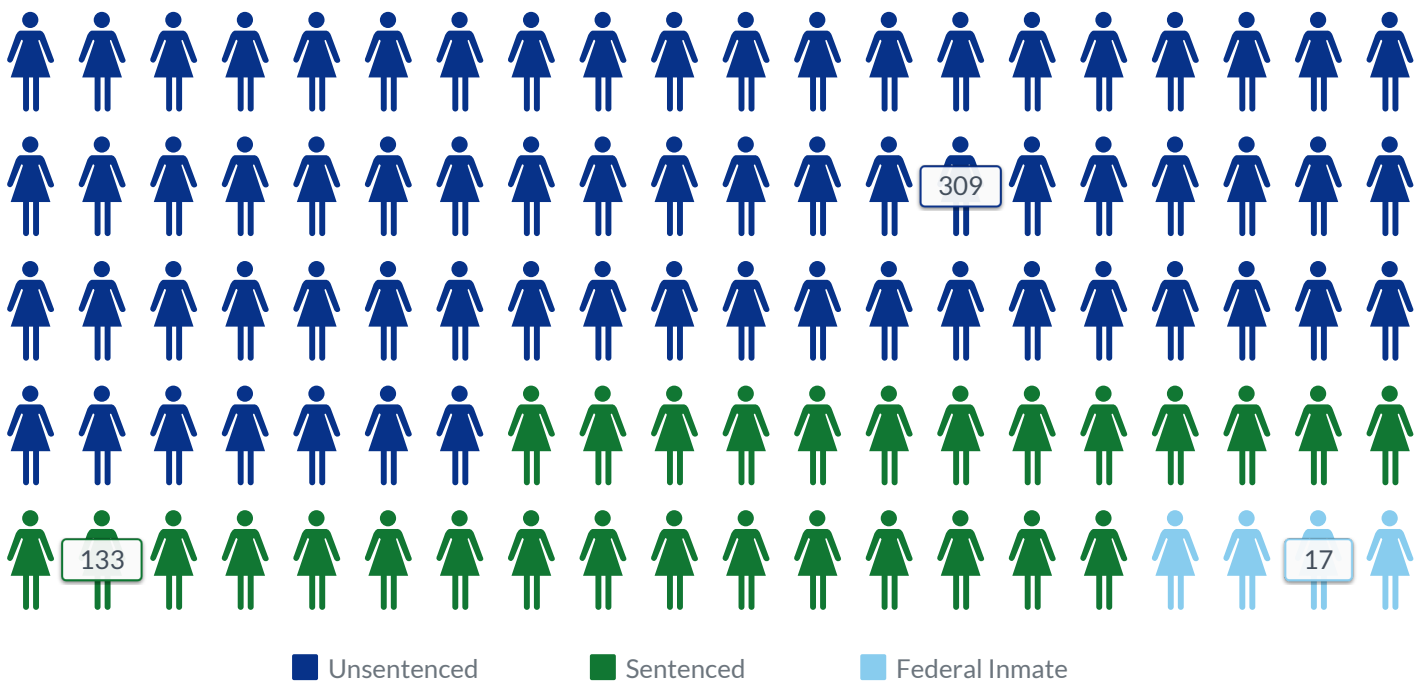


INSTITUTIONS

2022 In State Male Population by Legal Status



2022 In State Female Population by Legal Status





## INSTITUTIONS

## Counts of Offenses for Offenders in Institutions by Class, Description, and Offender Sex: July 1, 2022

Offense Class	Offense Description	Female	Male	Total
ALCOHOL	DUI	23	137	160
	FELONY DWI - 2+ PRIORS W/IN 5 YRS	7	48	55
	FELONY REFUSAL OF CHEM TEST- 2+ PRIORS	0	1	1
	FURNISH ALCOHOL TO MINOR	0	2	2
	IMPORT ALCOHOL-DRY AREA	0	1	1
	MANUF/SELL ALCOHOL W/O LIC - IN DRY AREA	0	1	1
	MANUF/SELL ALCOHOL W/O LICENSE	0	1	1
	MINOR IN POSSESSION/CONSUMING	0	3	3
	PROHIBITION OF IMPORTATION AFTER ELECTION	2	2	4
	REFUSE TO SUBMIT TO CHEMICAL TEST	0	3	3
	SEND/BRING ALCOHOL TO DRY AREA - LG AMT	0	1	1
	SEND/BRING ALCOHOL TO DRY AREA - SM AMT	1	0	1
	SEX OFF FURN ALCO PERS<21 LOCAL OPTION	0	1	1
	TRANS ALCOHOL BY CARRIER TO DRY AREA	0	2	2
	<b>TOTAL</b>	<b>33</b>	<b>203</b>	<b>236</b>
DRUGS	ATTEMPTED DRUGS 2	4	2	6
	MISCONDUCT- CONTROLLED SUBSTANCE 1	1	4	5
	MISCONDUCT- CONTROLLED SUBSTANCE 2	12	27	39
	MISCONDUCT- CONTROLLED SUBSTANCE 3	15	49	64
	MISCONDUCT- CONTROLLED SUBSTANCE 4	5	41	46
	MISCONDUCT- CONTROLLED SUBSTANCE 5	9	30	39
	<b>TOTAL</b>	<b>46</b>	<b>153</b>	<b>199</b>
FEDERAL INMATE	FEDERAL INMATE	17	180	197
	<b>TOTAL</b>	<b>17</b>	<b>180</b>	<b>197</b>
MOTOR VEHICLES	ATTEMPTED FAIL TO STOP AT DIRECTION OF OFFICER	1	1	2
	CMV-DRIVE WITH INVALID LICENSE	0	1	1
	DRIVE W/ LICENSE CANC/SUSP/REVOKED/LIM	5	23	28
	FAIL TO STOP AT DIRECTION OF OFFICER 1	6	63	69
	FAIL TO STOP AT DIRECTION OF OFFICER 2	0	7	7
	IMPROPER USE OF REGIS/TITLE/PLATES	0	2	2
	LEAVE SCENE OF ACCIDENT	0	3	3
	RECKLESS DRIVING	1	15	16
	<b>TOTAL</b>	<b>13</b>	<b>115</b>	<b>128</b>
PERSON	ASSAULT 1	14	61	75
	ASSAULT 2	4	79	83
	ASSAULT 3	17	163	180
	ASSAULT 4	28	251	279
	ATTEMPTED ASSAULT 1	0	5	5
	ATTEMPTED ASSAULT 2	0	12	12





## INSTITUTIONS

## Counts of Offenses for Offenders in Institutions by Class, Description, and Offender Sex: July 1, 2022

Offense Class	Offense Description	Female	Male	Total
PERSON (continued)	ATTEMPTED KIDNAPPING	0	1	1
	ATTEMPTED ROBBERY 1	0	1	1
	ATTEMPTED ROBBERY 2	0	5	5
	CHILD NEGLECT	0	2	2
	COERCION	0	5	5
	CONSPIRACY ROBBERY 1	1	2	3
	CRIMINALLY NEGLIGENT HOMICIDE	0	5	5
	CUSTODIAL INTERFERENCE 1- LEAVE STATE	1	0	1
	ENDANGERING WELFARE OF MINOR	0	1	1
	KIDNAPPING	4	35	39
	MANSLAUGHTER	3	38	41
	MURDER 1	11	244	255
	MURDER 2	23	200	223
	RECKLESS ENDANGERMENT	1	4	5
	ROBBERY 1	5	66	71
	ROBBERY 2	1	40	41
	STALKING 1	0	3	3
	STALKING 2	0	1	1
	<b>TOTAL</b>	<b>113</b>	<b>1,224</b>	<b>1,337</b>

PROBATION	PROBATION/PAROLE	69	552	621
PAROLE	<b>TOTAL</b>	<b>69</b>	<b>552</b>	<b>621</b>

PROPERTY	ARSON 1	1	3	4
	ARSON 2	1	1	2
	ARSON 3	0	1	1
	ATTEMPTED ARSON 1	0	1	1
	ATTEMPTED ARSON 2	0	4	4
	ATTEMPTED AUTO THEFT 1ST	2	9	11
	ATTEMPTED BURGLARY 1	2	4	6
	ATTEMPTED BURGLARY 2	0	4	4
	ATTEMPTED CRIM TRESPASS 1	0	1	1
	ATTEMPTED CRIMINAL MISCHIEF 3	0	2	2
	ATTEMPTED FORGERY 1	0	1	1
	ATTEMPTED THEFT 2	2	6	8
	BURGLARY 1	3	46	49
	BURGLARY 2	4	30	34
	CONCEAL MERCHANDISE	2	12	14
	CRIMINAL IMPERSONATION 1	1	0	1
	CRIMINAL MISCHIEF 1	1	2	3
	CRIMINAL MISCHIEF 2	0	1	1
	CRIMINAL MISCHIEF 3	3	19	22
	CRIMINAL MISCHIEF 4	3	42	45
	CRIMINAL MISCHIEF 5	1	3	4



## INSTITUTIONS

## Counts of Offenses for Offenders in Institutions by Class, Description, and Offender Sex: July 1, 2022

Offense Class	Offense Description	Female	Male	Total
PROPERTY (continued)	CRIMINALLY NEGLIGENT BURNING 2	1	1	2
	CRIMINAL TRESPASS 1	2	8	10
	CRIMINAL TRESPASS 2	6	20	26
	FORGERY 1	1	3	4
	FORGERY 2	2	5	7
	FORGERY 3	1	1	2
	FRAUD USE OF ACCESS DEVICE	2	2	4
	MALICIOUS DESTRUCTION OF PROPERTY	0	2	2
	OBSTRUCT INVESTIGATION BY FLEEING	0	1	1
	RESIST/INTERFERE WITH OFFICER	1	1	2
	SCHEME TO DEFRAUD	0	2	2
	THEFT 1	2	6	8
	THEFT 2	8	47	55
	THEFT 3	5	26	31
	THEFT 4	4	7	11
	VEHICLE TAMPERING	0	4	4
	VEHICLE THEFT 1	7	51	58
	VEHICLE THEFT 2	0	3	3
	<b>TOTAL</b>	<b>68</b>	<b>382</b>	<b>450</b>
PUBLIC ORDER- ADMIN	ATTEMPT	0	1	1
	ATTEMPTED ESCAPE 2	2	16	18
	ATTEMPTED ESCAPE 3	3	6	9
	ATTEMPTED PERJURY	0	1	1
	ATTEMPTED TAMPERING W/PHYSICAL EVIDENCE	1	0	1
	CONTEMPT	0	2	2
	CONTRIBUTING TO DELINQUENCY OF MINOR	1	1	2
	DISORDERLY CONDUCT	3	15	18
	DISTRIBUTE INDECENT MATERIAL TO MINORS	0	1	1
	ELUDING A POLICE OFFICER	0	2	2
	ENTER/REMAIN BUISNESS PROPERTY	3	21	24
	ESCAPE 2	1	19	20
	ESCAPE 3	9	39	48
	ESCAPE 4	0	4	4
	ESCAPE/ATTEMPT TO ESCAPE	0	2	2
	FAIL TO APPEAR	3	8	11
	FAIL TO COMPLY	5	20	25
	FAILURE TO REGISTER AS SEX OFFENDER 1	0	13	13
	FAILURE TO REGISTER AS SEX OFFENDER 2	0	21	21
	FALSE ID	3	10	13
	FALSE INFORMATION/STATEMENT	0	1	1
	FRAUDULENT INSURANCE ACT-\$500-\$9,999	0	1	1
	FUGITIVE FROM JUSTICE	1	8	9
	HARASSMENT 1	3	17	20



## INSTITUTIONS

## Counts of Offenses for Offenders in Institutions by Class, Description, and Offender Sex: July 1, 2022

Offense Class	Offense Description	Female	Male	Total
PUBLIC ORDER- ADMIN (continued)	HARASSMENT 2	3	30	33
	INDECENT PROD PIC BRST/ANUS/GNTLS MINOR	0	1	1
	INDECENT VIEWING	0	1	1
	INSURANCE OR OTHER SECURITY REQUIRED	0	1	1
	INTERFERENCE	0	6	6
	MAKING A FALSE REPORT	3	10	13
	OBSTRUCT PEDESTRIAN OR VEHICULAR TRAFFIC	0	1	1
	PERJURY	0	2	2
	PROMOTING CONTRABAND 1	4	13	17
	PROMOTING CONTRABAND 2	0	4	4
	RESIST/INTERFERE WITH ARREST	1	26	27
	RIOT	0	1	1
	TAMPERING W/ PHYSICAL EVIDENCE	1	5	6
	TAMPERING W/ WITNESS 1	0	3	3
	TERRORISTIC THREATENING 2	0	8	8
	UNAUTHORIZED ENTRY	0	5	5
	UNLAWFUL CONTACT 1	3	42	45
	UNLAWFUL CONTACT 2	0	1	1
	UNLAWFUL EVASION 1	0	13	13
	UNLAWFUL EVASION 2	0	4	4
	VIOLATE CONDITIONS OF RELEASE	24	96	120
	VIOLATE FINANCIAL ABUSE PROTECTIVE ORDER	0	1	1
	VIOLATE PROTECTIVE ORDER	2	18	20
	VIOLATE STALKING OR SEX ASSLT PROTEC ORD	0	1	1
	VIOLATION OF CITY ORDINANCE	0	1	1
	VIOLATION OF CUSTODIAN DUTY - RE MISDMNT	1	0	1
	<b>TOTAL</b>	<b>80</b>	<b>523</b>	<b>603</b>
SEX/NON REGISTERABLE	FAMILY VIOLENCE	1	3	4
	INDECENT EXPOSURE	0	1	1
	INDECENT EXPOSURE 2	0	4	4
	<b>TOTAL</b>	<b>1</b>	<b>8</b>	<b>9</b>



## INSTITUTIONS

## Counts of Offenses for Offenders in Institutions by Class, Description, and Offender Sex: July 1, 2022

Offense Class	Offense Description	Female	Male	Total
SEX REGISTERABLE	ATTEMPTED SEX ABUSE MINOR 1	0	30	30
	ATTEMPTED SEX ABUSE MINOR 2	0	40	40
	ATTEMPTED SEX ABUSE MINOR 3	0	1	1
	ATTEMPTED SEX ASSAULT 1	0	17	17
	ATTEMPTED SEX ASSAULT 2	0	19	19
	DISTRIBUTE CHILD PORNOGRAPHY	0	2	2
	ENTICEMENT OF MINOR <16 BY SEX OFFENDER	0	1	1
	ENTICEMENT OF MINOR UNDER 16	0	3	3
	EXPLOITATION OF MINOR-MAKE PORN	0	2	2
	INCEST	0	3	3
	INDECENT EXPOSURE 1	0	9	9
	INDECENT EXPOSURE 2 - VICTIM UNDER 16	0	1	1
	ONLINE ENTICEMENT OF A MINOR	0	2	2
	POSSESS CHILD PORNOGRAPHY	0	33	33
	SEX TRAFFICKING 1	0	1	1
	SEX TRAFFICKING 2	0	2	2
	SEXUAL ABUSE OF MINOR 1	4	217	221
	SEXUAL ABUSE OF MINOR 2	4	182	186
	SEXUAL ABUSE OF MINOR 3	1	15	16
	SEXUAL ASSAULT 1	2	147	149
	SEXUAL ASSAULT 2	0	79	79
	SEXUAL ASSAULT 3	0	32	32
	SOLICITATION SEX ABUSE MINOR 2	0	1	1
	SOLICITATION SEX ASSAULT 2	1	0	1
	UNLWFL EXPLOIT OF MINOR -MAKE CHILD PORN	0	7	7
	TOTAL	12	846	858
WEAPONS	ATTEMPTED MISC/WEAPONS 1	0	5	5
	ATTEMPTED MISC/WEAPONS 2	0	2	2
	ATTEMPTED MISC/WEAPONS 3	0	6	6
	MISCONDUCT INVOLVING WPNS 1	0	9	9
	MISCONDUCT INVOLVING WPNS 2	0	11	11
	MISCONDUCT INVOLVING WPNS 3	5	49	54
	MISCONDUCT INVOLVING WPNS 4	2	9	11
	MISCONDUCT INVOLVING WPNS 5	0	1	1
	POSSESS OR DISCHARGE FIREARM WHEN INTOX.	0	1	1
	TOTAL	7	93	100





# Community Residential Centers (CRCs)

This section of the Offender Profile includes information about all offenders incarcerated in CRC's and our two residential treatment centers, The Akeela House and Clitheroe Center. It also includes data on those under electronic monitoring and those monitored by CRCs offsite who are entered into the ACOMS database. This report is a snapshot of

offenders incarcerated and entered into the ACOMS database on or before July 1, 2022. The Alaska Native race category includes a small number of Native Americans not indigenous to Alaska. Information about offenses is on the most serious charge only. Offense classes are semi-arbitrary.

\* Residential Treatment Center

## Cordova Center

130 Cordova St.  
Anchorage, AK 99501  
(907) 274-1022

## Glacier Manor

5597 Aisek  
Juneau, AK 99801  
(907) 780-4515

## Midtown Center

2508 Margies Place  
Anchorage, AK 99503  
(907) 222-6502

## Northstar Center

PO Box 80670  
Fairbanks, AK 99708  
(907) 474-4955

## Parkview Center

831 B St.  
Anchorage, AK 99503  
(907) 272-1641

## Seaside Center

PO Box 2129  
Nome, AK 99762  
(907) 443-6390

## Tundra Center

PO Box 485  
Bethel, AK 99559  
(907) 543-3414

## \*Akeela House

2804 Bering St.  
Anchorage, AK 99503  
(907) 561-1200

## \*Clitheroe Center

3600 E 20th Ave.  
Anchorage, AK 99508  
(907) 276-2898

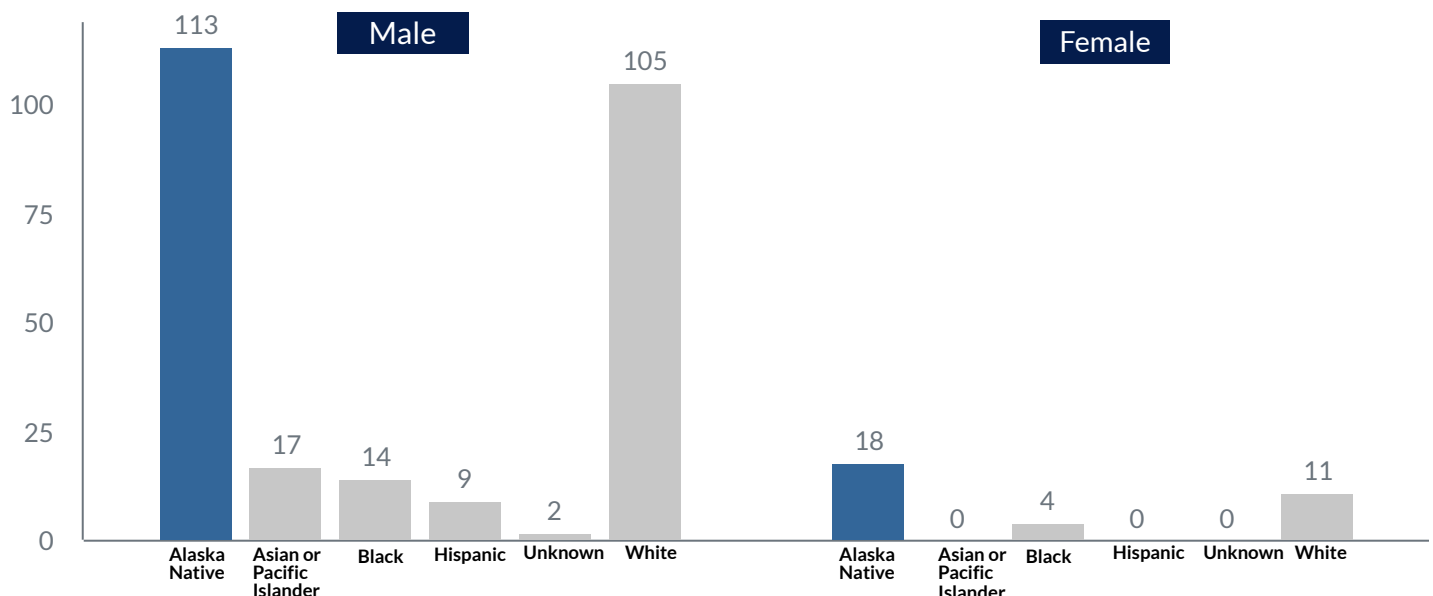


# Community Residential Centers

Counts by Location and Sex on July 1, 2022

Location	Female	Male	Total
Akeela House	0	0	0
Clitheroe Center	3	10	13
Cordova Center	0	78	78
Glacier Manor	1	27	28
Midtown Center	16	0	16
Northstar Center	6	26	32
Parkview Center	0	72	72
Seaside Center	3	22	25
Tundra Center	4	25	29
Total	33	260	293

## Counts of Offenders in Community Residential Centers by Race/Ethnicity and Offender Sex: July 1, 2022

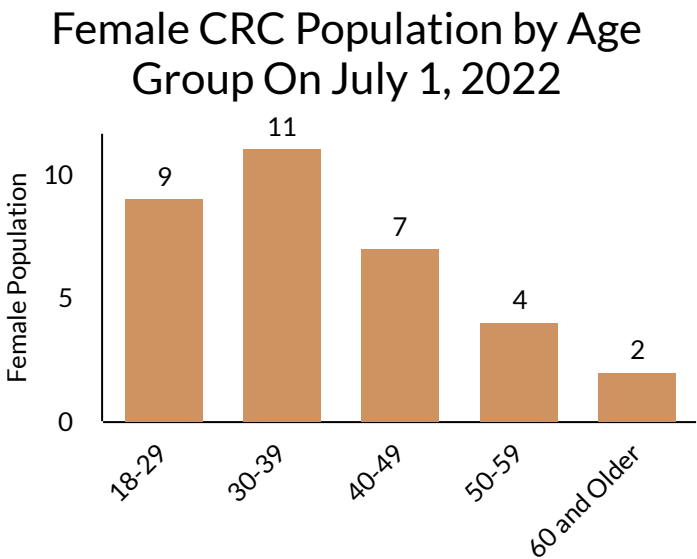
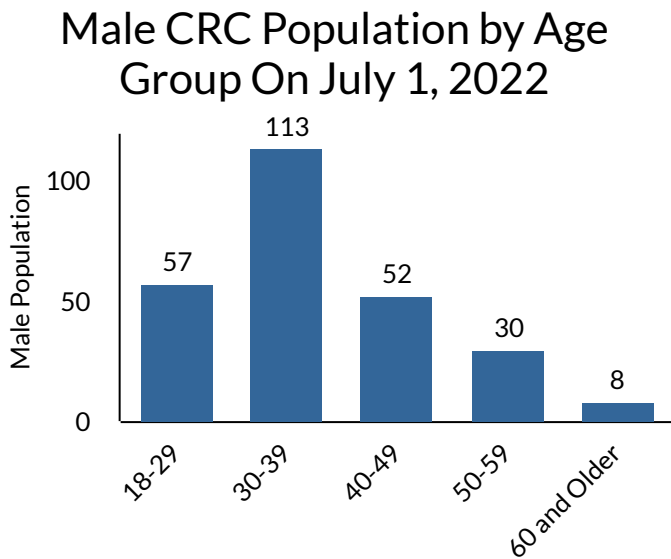




C R C s

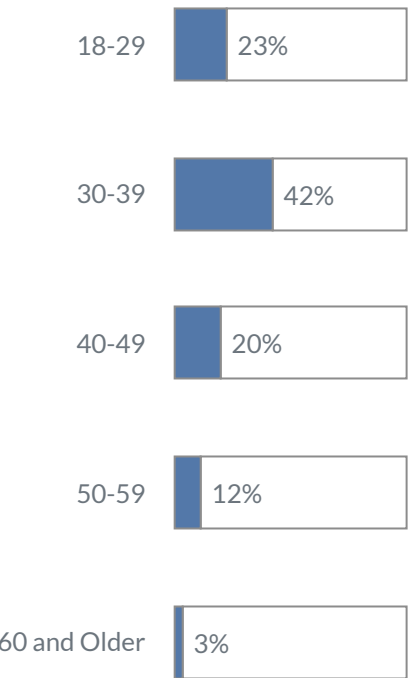
# Offenders in Community Residential Centers by Age and Sex

2022 | DOC Research & Analysis

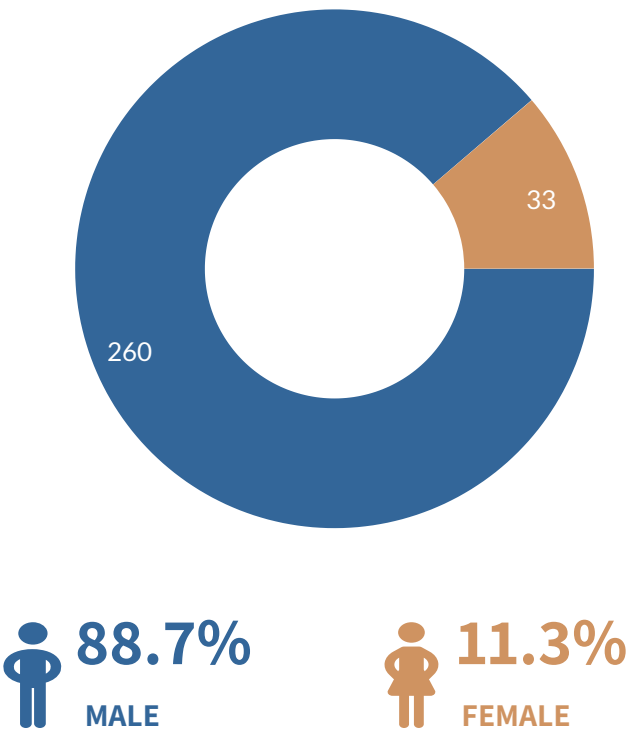


## State of Alaska CRC Population

By Age



By Sex



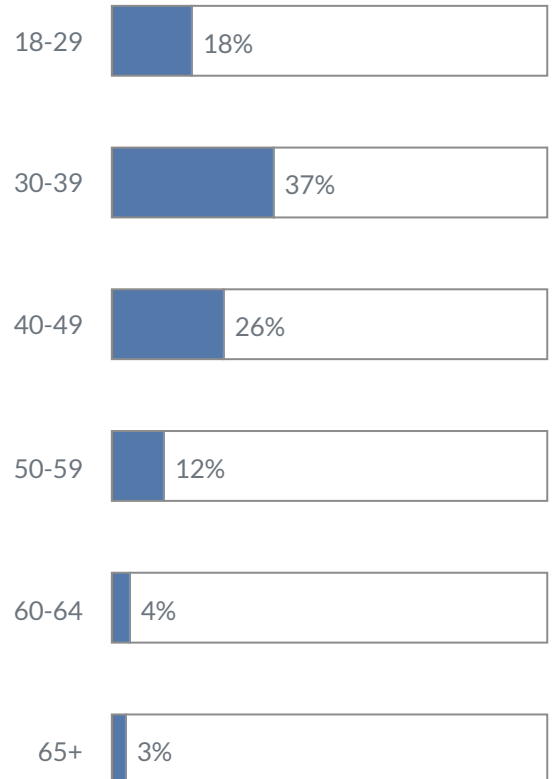


# Electronic Monitoring Population Counts

Counts taken on July 1, 2022

Location	Female	Male	Total
Anchorage	16	80	96
Clitheroe	1	4	5
Cordova	0	1	1
Fairbanks	3	28	31
Glacier Manor	0	1	1
Juneau	1	6	7
Kenai	2	12	14
Ketchikan	0	3	3
Kodiak	1	0	1
Palmer	8	25	33
Total	32	160	192

## By Age

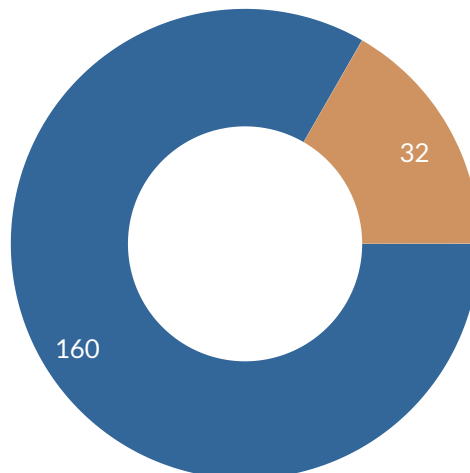


## By Sex

83.3%



MALE



16.7%



FEMALE



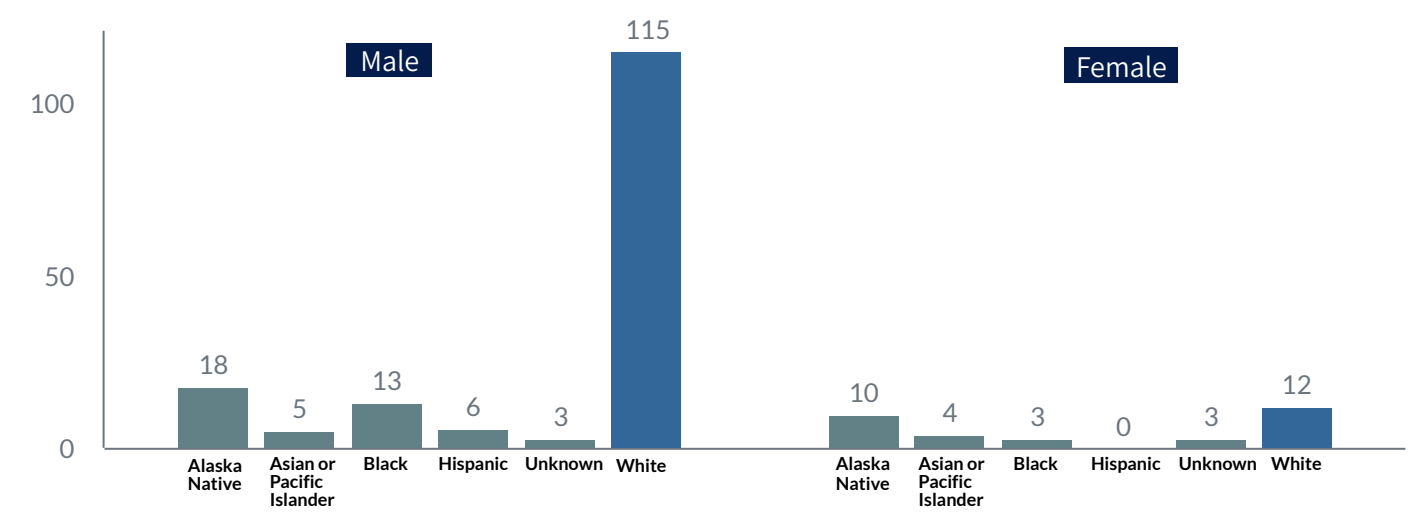


EM

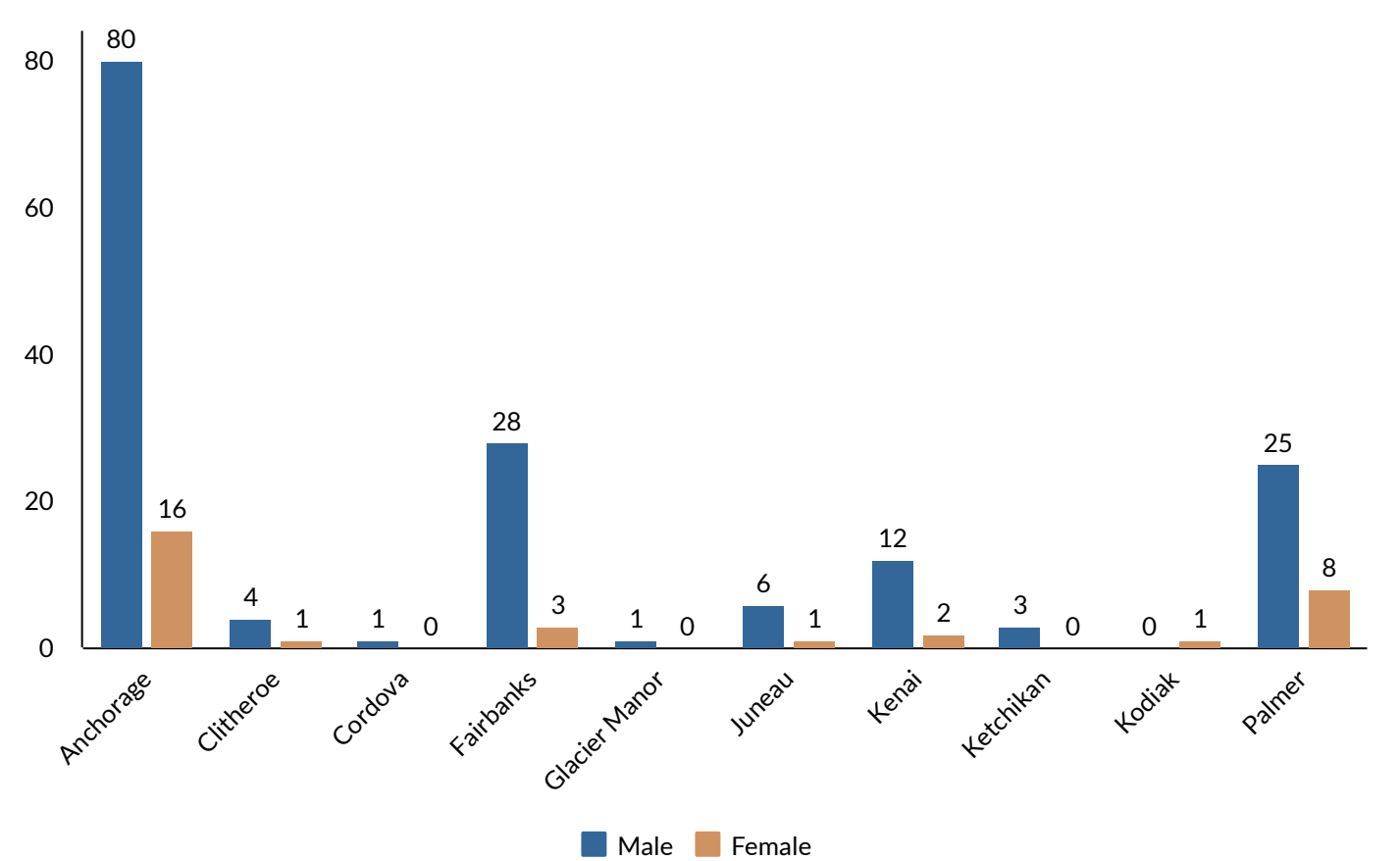
# Electronic Monitoring by Race/Ethnicity, Location and Sex

2022 | DOC Research and Analysis

Counts of Offenders on Electronic Monitoring by Race/Ethnicity and Offender Sex: July 1, 2022



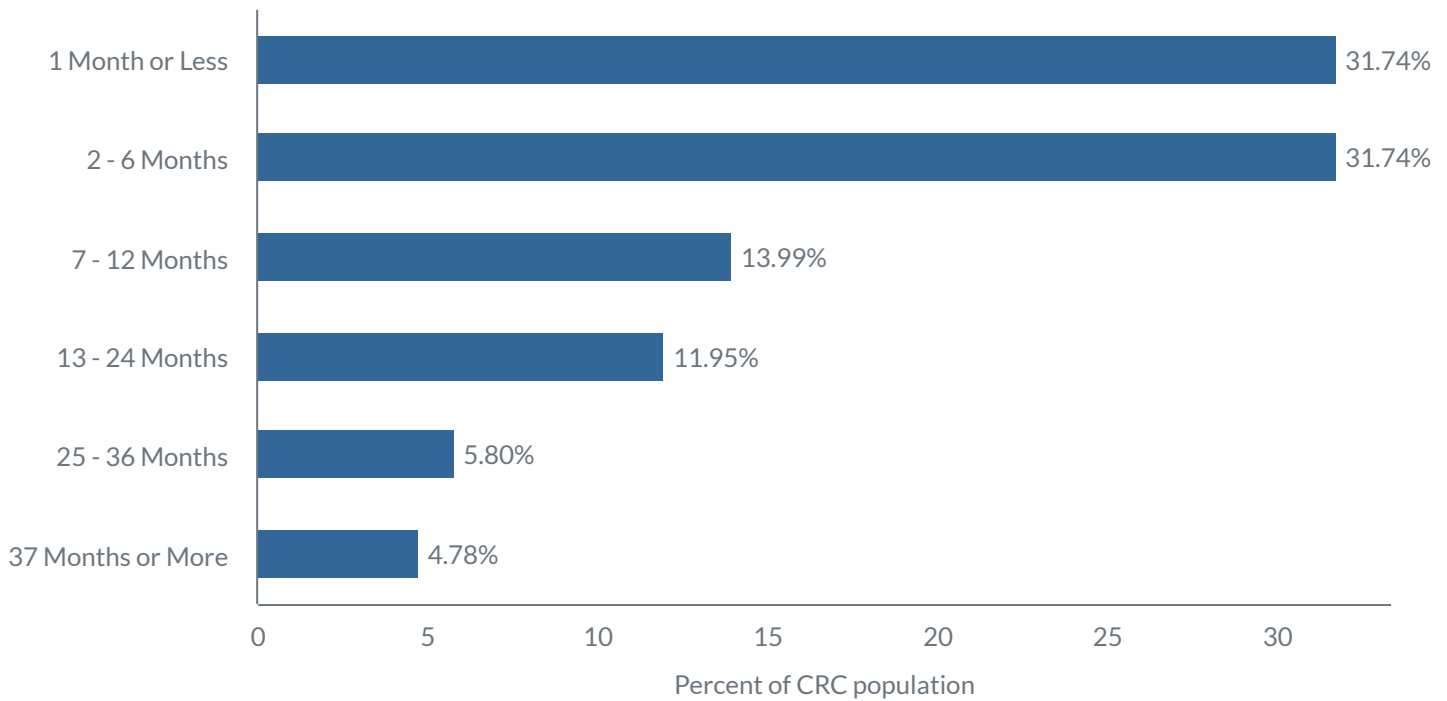
Counts of Offenders on Electronic Monitoring by Location and Offender Sex: July 1, 2022



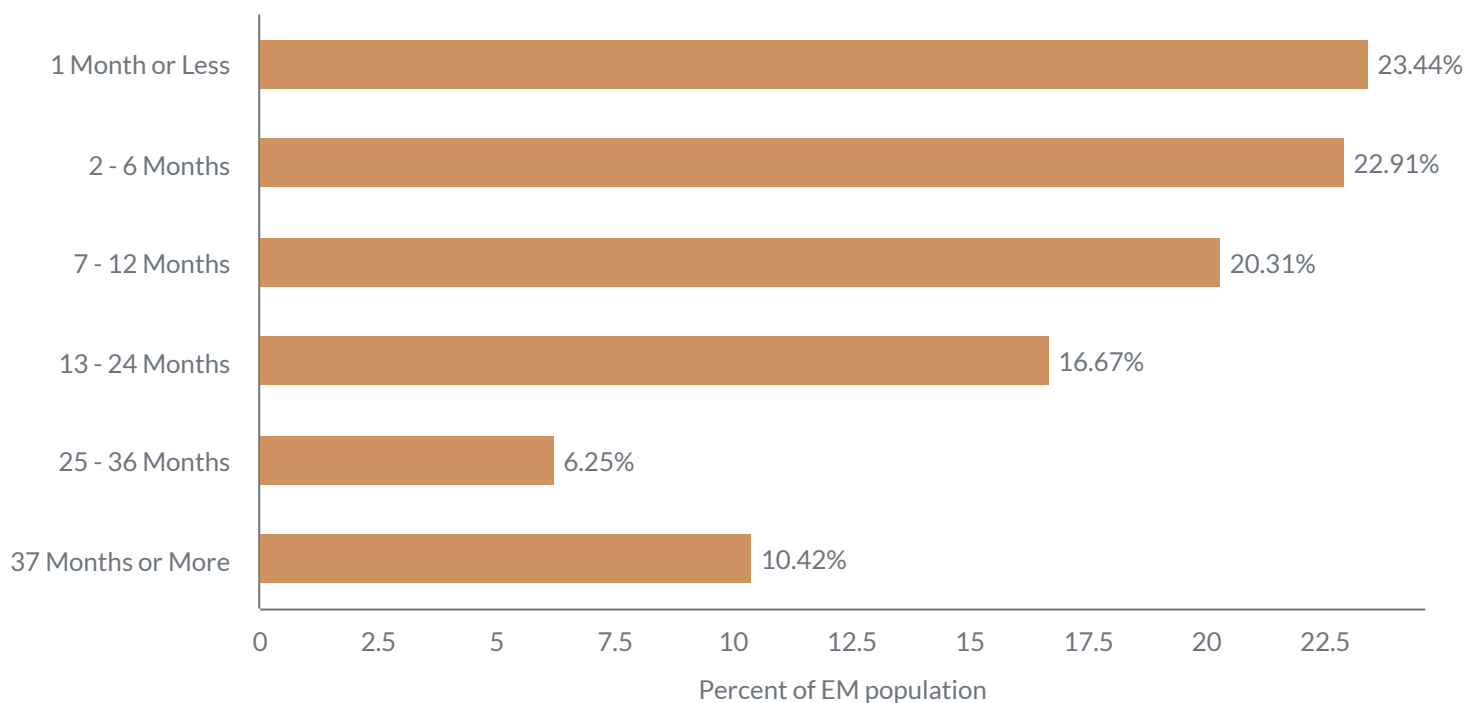


# Community Residential Centers & Electronic Monitoring

Percent of Offenders in Community Residential Centers by Length of Stay From Admission: July 1, 2022



Percent of Offenders on Electronic Monitoring by Length of Monitoring From Admission: July 1, 2022





# Community Residential Centers & Electronic Monitoring

Counts and Percent of Offenders in Community Residential Centers  
by Length of Stay From Admission and Offender Sex:  
July 1, 2022

Months In	Female	Percent of Female CRC Population	Male	Percent of Male CRC Population
1 month or less	13	39.40%	80	30.77%
2 months	7	21.21%	86	33.08%
7 months	7	21.21%	34	13.08%
13 months	4	12.12%	31	11.92%
25 months	2	6.06%	15	5.77%
37 months	0	0%	14	5.38%
Total	33	100%	260	100%

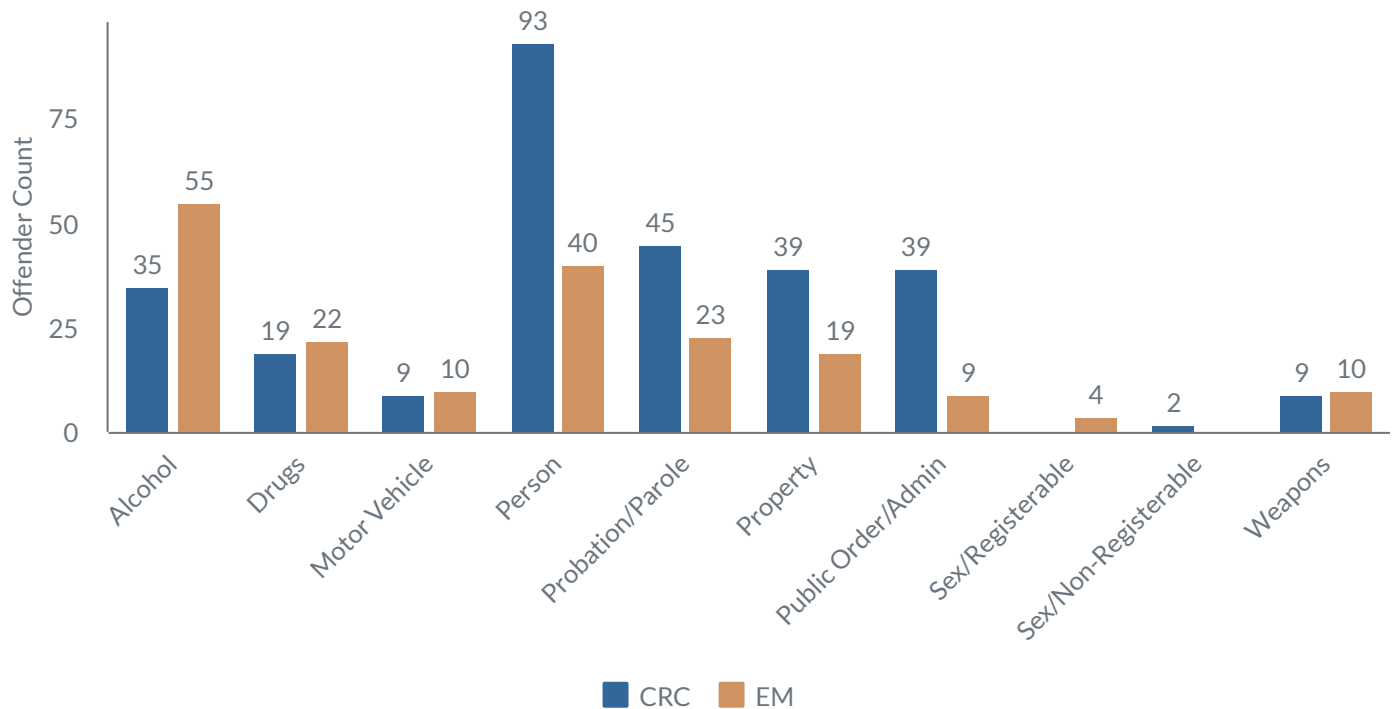
Counts and Percent of Offenders on Electronic Monitoring  
by Length of Stay From Admission and Offender Sex:  
July 1, 2022

Months In	Female	Percent of Female EM Population	Male	Percent of Male CRC Population
1 month or less	12	37.50%	33	20.62%
2 months	7	21.87%	37	23.12%
7 months	6	18.75%	33	20.63%
13 months	5	15.63%	27	16.88%
25 months	0	0%	12	7.50%
37 months	2	6.25%	18	11.25%
Total	32	100%	160	100%

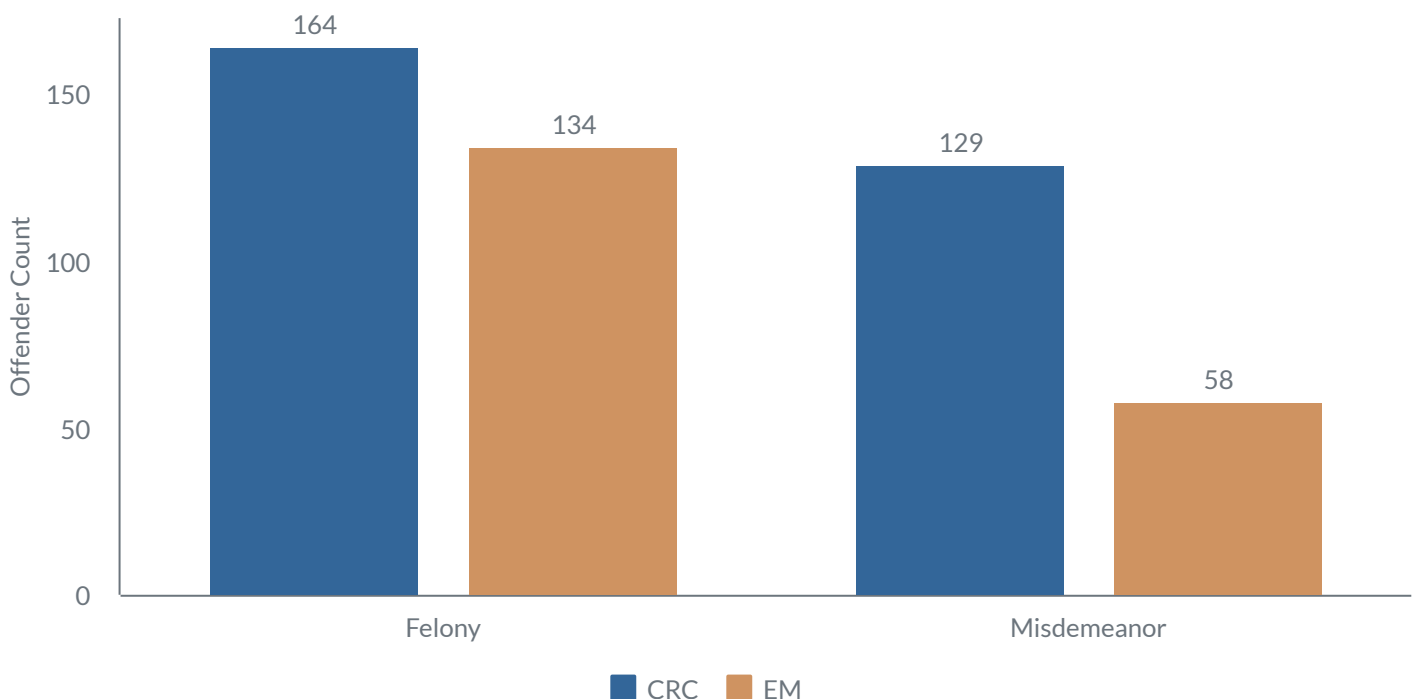


# Community Residential Centers & Electronic Monitoring

Counts of Offenders in Community Residential Centers and on Electronic Monitoring by Offense Class as of July 1, 2022



Count of Offenders in Community Residential Centers & on Electronic Monitoring by Crime Degree: July 1, 2022





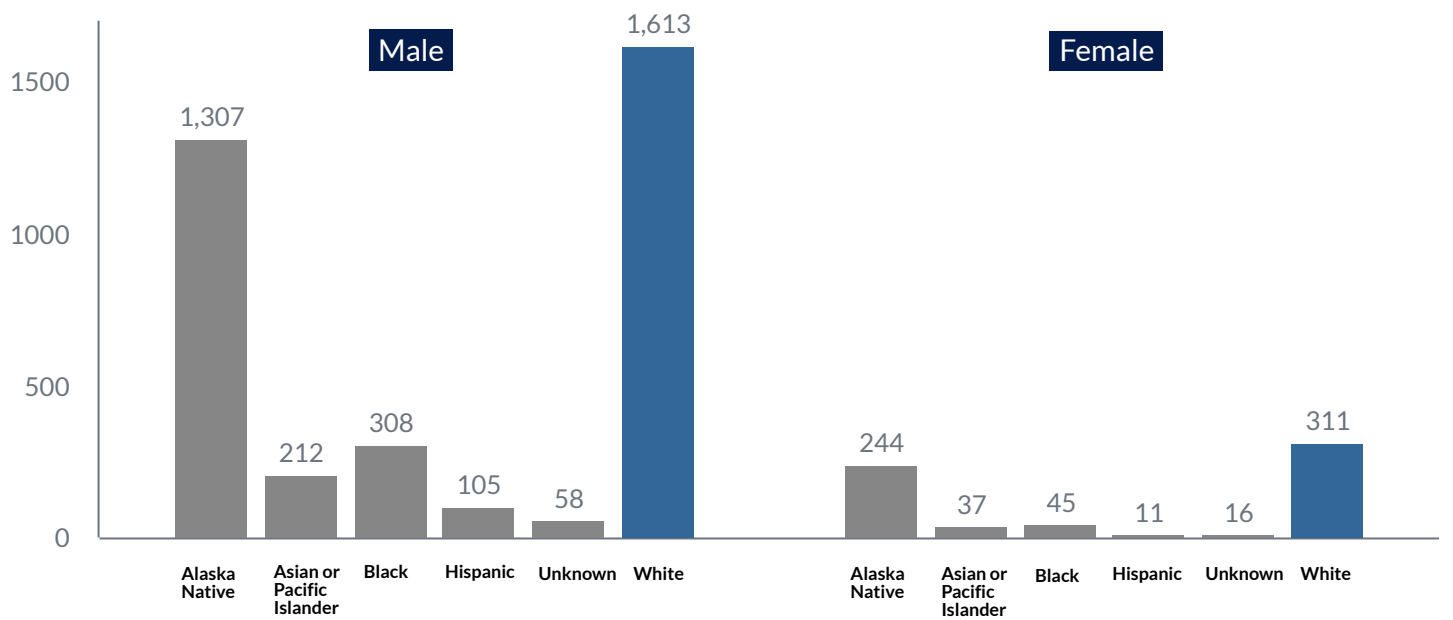


# Probation and Parole

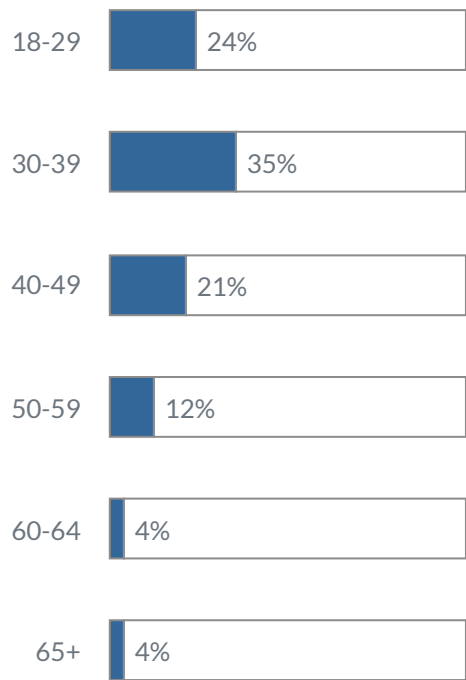
This section includes information about all probationers and parolees under the supervision of the Division of Probation and Parole who are entered into the ACOMS database. It consists of a snapshot of

probationers and parolees entered into the ACOMS database on or before July 1, 2022. The Alaska Native race category includes a small number of Native Americans not indigenous to Alaska.

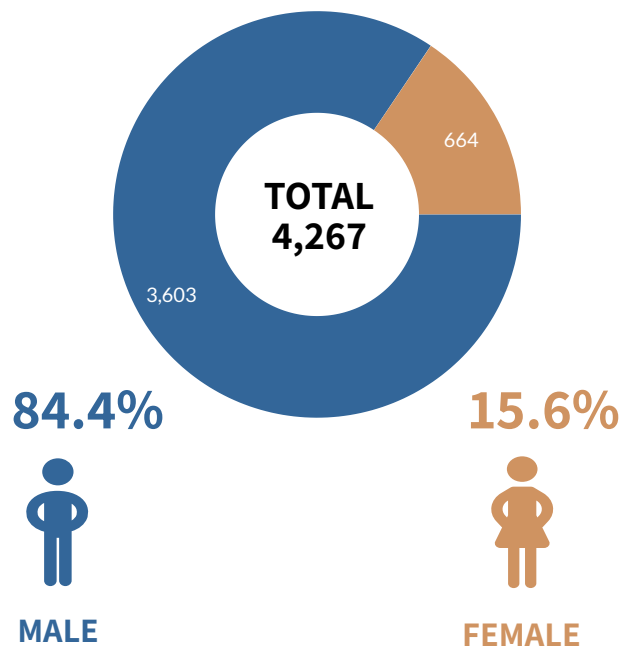
Counts of Probationers/Parolees by Race/Ethnicity and Sex: July 1, 2022



By Age



By Sex





# Probation and Parole

## Location Counts on July 1, 2022

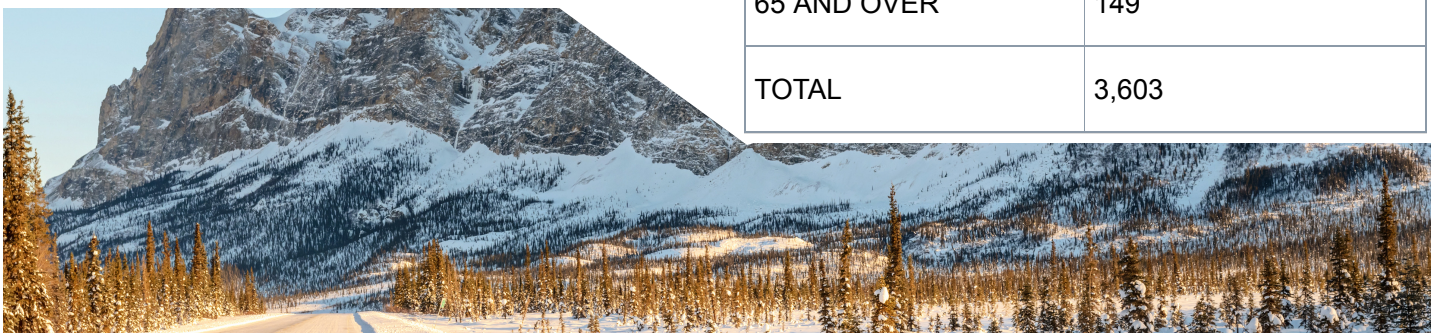
Agency	Female	Male
ANCH PRE-SENT INV UNIT	5	53
ANCHORAGE EM	2	1
ANCHORAGE PROBATION	338	1,766
BARROW PROBATION	3	27
BETHEL PROBATION	18	261
DILLINGHAM PROBATION	5	62
FAIRBANKS PROBATION	67	352
JUNEAU PROBATION	18	180
KENAI PROBATION	67	264
KETCHIKAN PROBATION	18	69
KODIAK PROBATION	16	64
KOTZEBUE PROBATION	18	86
NOME PROBATION	13	82
PALMER PROBATION	72	302
SITKA PROBATION	4	34
TOTAL	664	3,603

## Female Age Statistics

Age Group	Count
19 AND UNDER	2
20 - 29	173
30-39	264
40-49	138
50-59	68
60-64	11
65 AND OVER	8
TOTAL	664

## Male Age Statistics

Age Group	Count
19 AND UNDER	19
20 - 29	834
30-39	1,243
40-49	740
50-59	460
60-64	158
65 AND OVER	149
TOTAL	3,603





# Pretrial Supervision

This section includes information about people placed on Pretrial supervision by the Division of Probation and Parole who are entered into the ACOMS database. It consists of information entered into the ACOMS database on or before July 1, 2022.

## Pretrial Counts by Supervision Status on July 1, 2022

Status	2020	2021	2022
Community Supervision	2,283	2,905	2,745
*Pending Release	1,005	1,387	1,348

\*The defendant is incarcerated in prison and must meet additional court ordered obligations before they can be released to Pretrial Community Supervision.

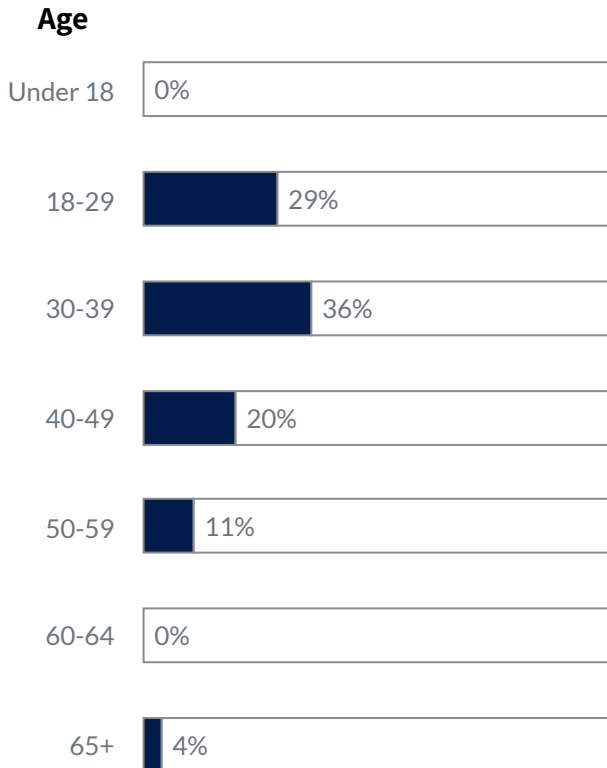
## Pretrial Supervision by Office & Status on July 1, 2022

Pretrial Office	Community Supervision	Pending Release
Anchorage EM	0	0
Anchorage Pretrial	1,411	902
Bethel Pretrial	23	15
Craig PD Pretrial	2	0
Dillingham Pretrial	43	1
Fairbanks Pretrial	298	143
Haines PD Pretrial	1	0
Juneau Pretrial	214	44
Kenai Pretrial	291	50
Ketchikan Pretrial	64	31
Kodiak Pretrial	6	0
Nome Pretrial	0	0
Palmer Pretrial	375	154
Sitka Pretrial	10	7
Utqiagvik Pretrial	7	1
Total	2,745	1,348

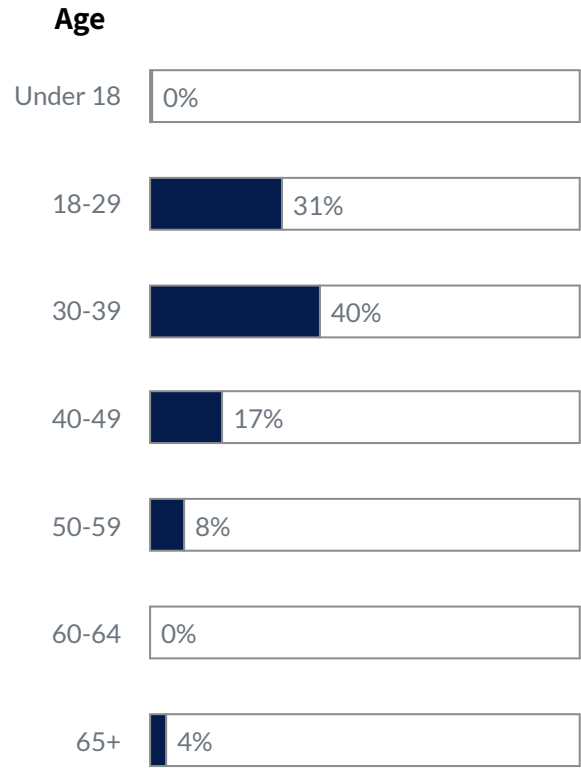


## Pretrial Supervision by Age Group, Race and Status on July 1, 2022

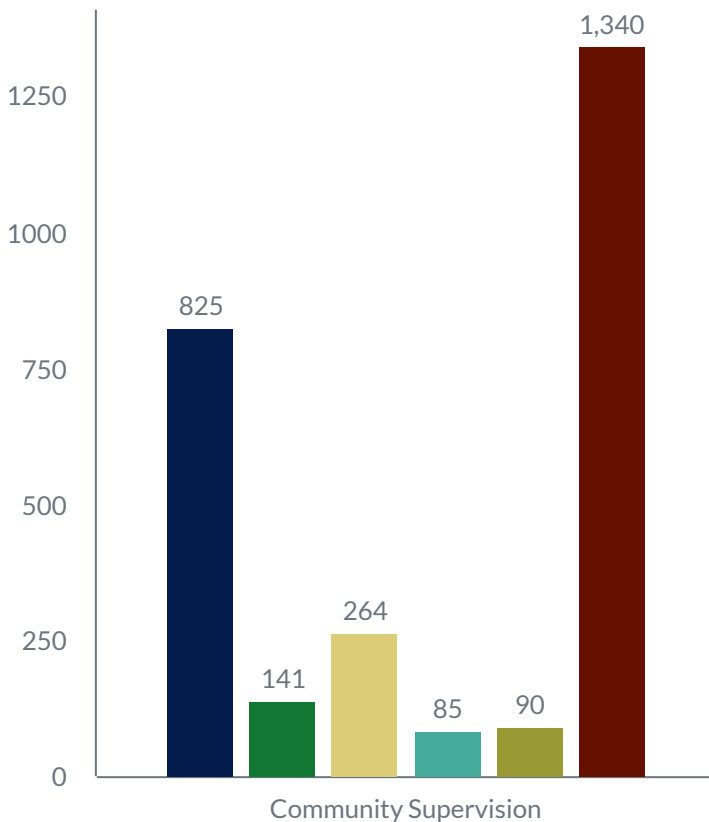
### Community Supervision



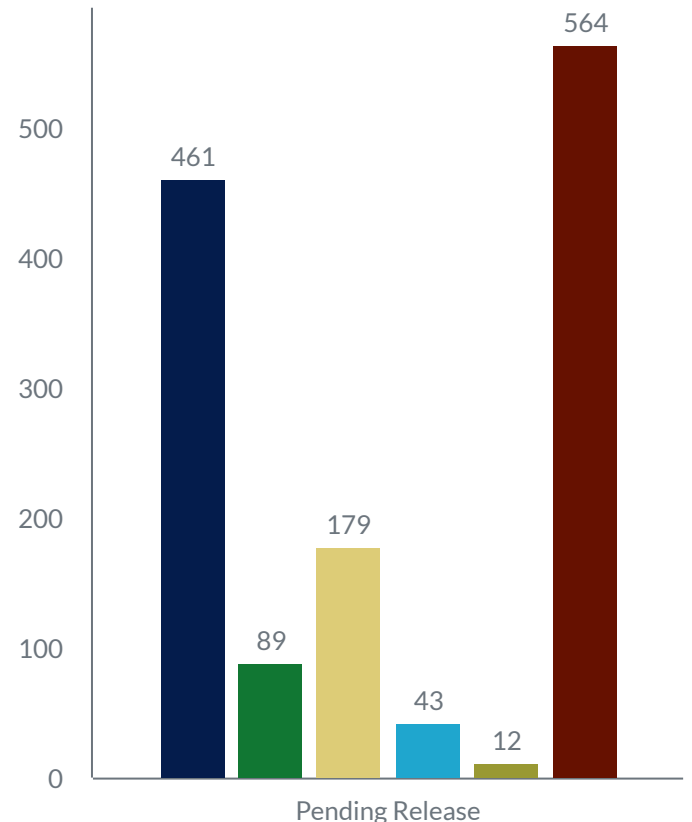
### Pending Release



### Race



### Race



■ ALASKA NATIVE ■ ASIAN or PACIFIC ISLANDER ■ BLACK ■ HISPANIC ■ UNKNOWN ■ WHITE





# Recidivism

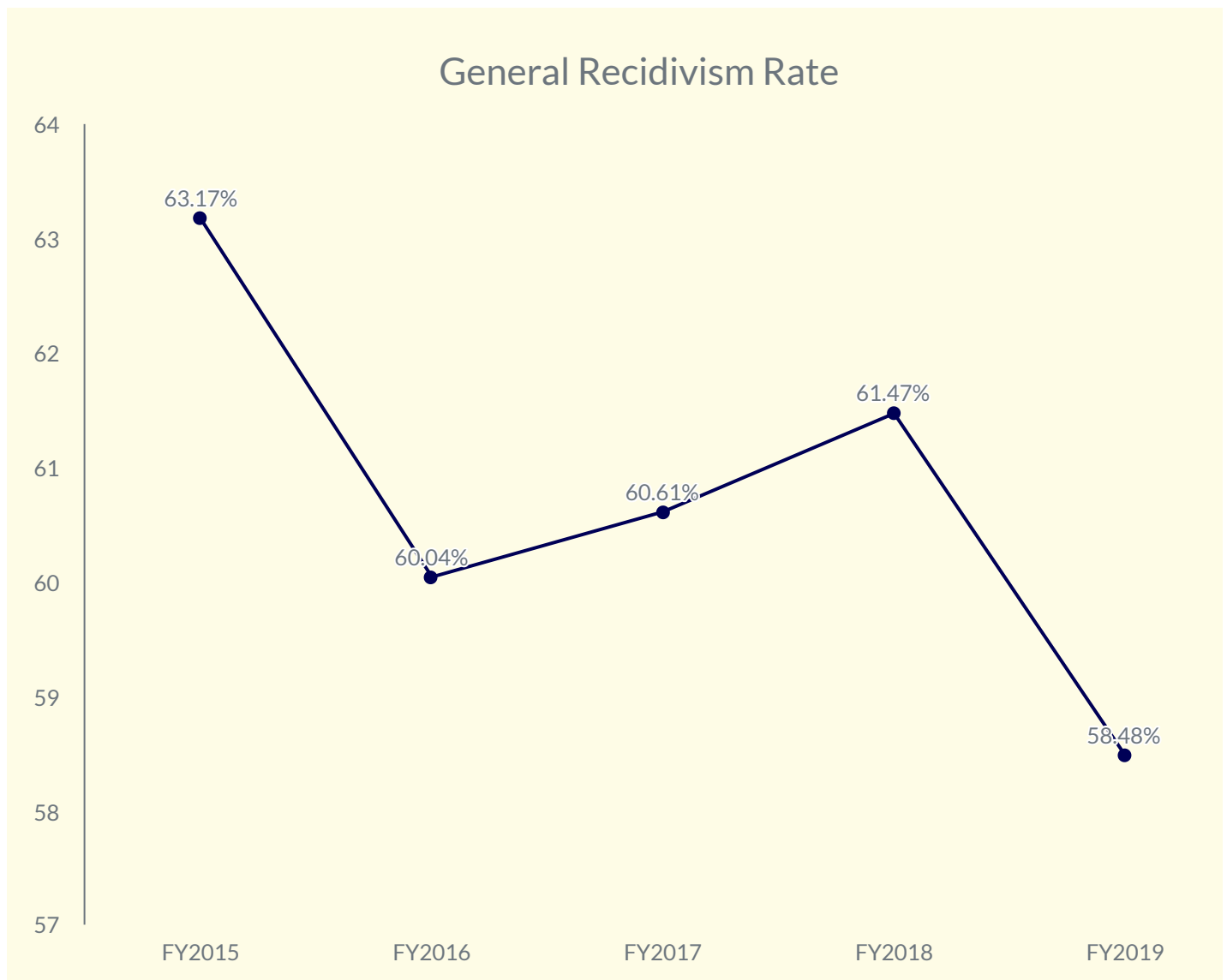
2022 | DOC Research & Analysis

Alaska's general recidivism rates are defined as any person released from custody preceded by a felony conviction (including Probation or Parole Violation) who returns to incarceration within 3 years of release for any conviction type including misdemeanor, felony, or Probation/Parole Violation.

Unless noted, Alaska recidivism rates are 3-year rates. Consequently, the 2022 Offender Profile looks at Fiscal Year 2019 releases. This is to allow for up to 3 years to recidivate.

## General Recidivism Rate

	FY2015	FY2016	FY2017	FY2018	FY2019
3 - Year	63.17%	60.04%	60.61%	61.47%	58.48%





# Recidivism

2022 | DOC Research & Analysis

The department recorded the lowest recidivism rate ever calculated using current definitions in FY2016. This rate is based on the number of convicted felony offenders released back into the community and have been reincarcerated as a result of a new sentence, had parole or probation

revocation within three years of the release. The department continues its efforts for successful prisoner re-entry in order to reduce criminal recidivism and will report new information accordingly.

## Offenders Returning to Incarceration Within 3 Years of Release

Fiscal Year	Offenders Released	Offenders Returned	Percentage Returning
FY 2019	2,575	1,506	58.48%
FY 2018	2,735	1,691	61.47%
FY 2017	2,973	1,802	60.61%

## Recidivism by Offense Class at Release

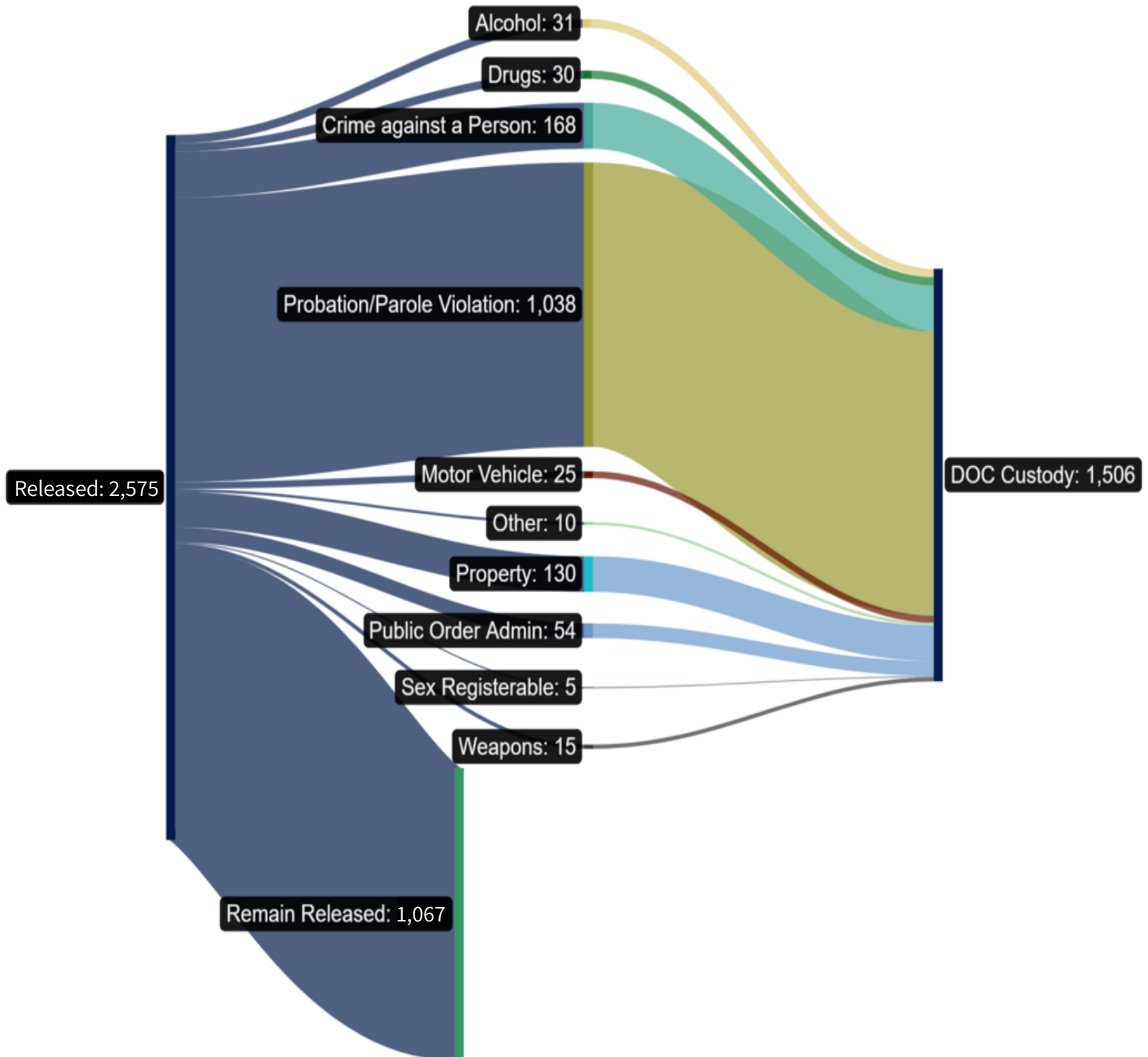
Class	Releases	Returns	Rate
Alcohol	94	35	37.23%
Drugs	97	38	39.18%
Motor Vehicle	34	17	50.00%
Other/Unknown	2	0	0.00%
Person	337	181	53.71%
Probation/Parole	1,525	975	63.93%
Property	296	176	59.46%
Public Order/Admin	41	26	63.42%
Sex/Non-Registerable	3	1	33.33%
Sex/Registerable	97	35	36.08%
Weapons	49	22	44.90%
Totals	2,575	1,506	58.48%



# Recidivism

2022 | DOC Research & Analysis

The following graph depicts the path towards the recidivism of felons released on July 1, 2019. The crimes in the center of the chart are the reasons these prisoners returned to DOC custody. These crimes occurred within 3 years of release.





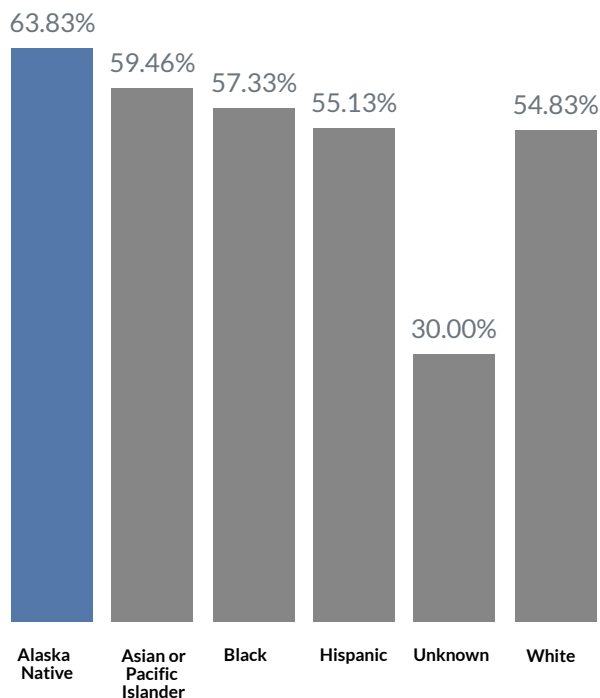
# Recidivism

2022 | DOC Research &amp; Analysis

The following table displays data about recidivation and the offenders' previous offense. The reason for return to DOC custody is found on the top portion of the table, while the previous offense can be found on the left-hand side of the table. Probation/Parole has the highest numbers for offense class at release, it being the reason for return and recidivists within that release group.

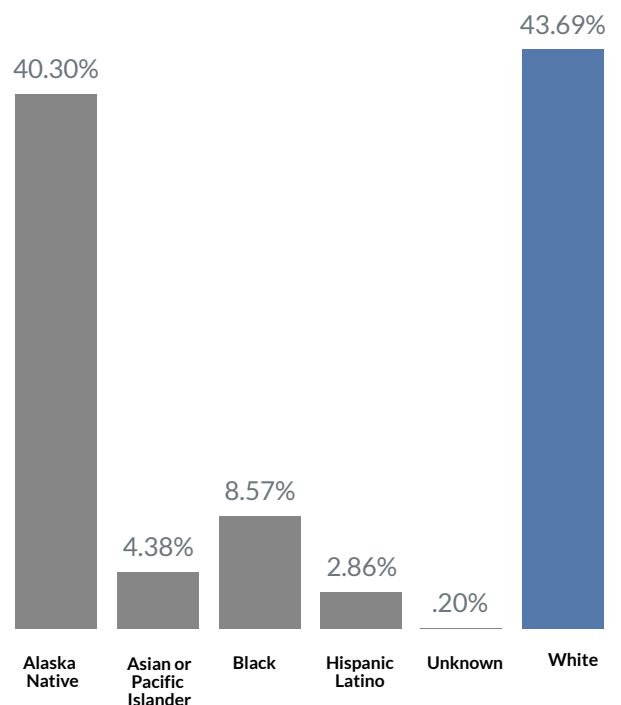
Exit Offense Class Released in FY 2019	Releases	Alcohol	Drugs	Person	Probation/Parole	Motor Vehicle	Other	Property	Public Order Admin	Sex Registerable	Weapons	Total Returns
Alcohol	94	5	1	4	25	0	0	0	0	0	0	35
Drugs	97	1	8	3	24	1	1	0	0	0	0	38
Motor Vehicle	34	0	0	2	10	3	0	2	0	0	0	17
Person	337	4	1	44	118	3	0	6	5	0	0	181
Probation/Parole	1,525	20	14	101	703	11	8	75	33	2	8	975
Property	296	1	3	9	96	7	1	46	10	0	3	176
Public Order/Admin	41	0	2	2	17	0	0	1	4	0	0	26
Sex/Non-Registerable	3	0	0	0	1	0	0	0	0	0	0	1
Sex/Registerable	97	0	0	1	29	0	0	0	2	3	0	35
Weapons	49	0	1	2	15	0	0	0	0	0	4	22
Total	2,573	31	30	168	1038	25	10	130	54	5	15	1,506

Recidivism Rates of Race Within Race Populations - Release Year FY2019



Each bar in this graph represents the recidivism rate for a specific race population amongst that race population after release. 63.83% of Alaska Native felons released on July 1, 2019 recidivated.

Recidivism Rates of Race Within Recidivist Populations - Release Year FY2019



Each bar in this graph represents the recidivism rate for a specific race population amongst the total recidivist population. 43.69% of all felons released on July 1, 2019 that recidivated were white.



Continued from page 6

# A Decade Later Where are they now?

This chart represents the individuals in Alaska prisons on July 1, 2012.  
Here is a look at how many times they were incarcerated over a decade.

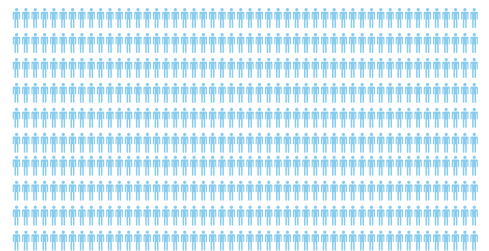
988

Imprisoned Once and Released  
Without Returning



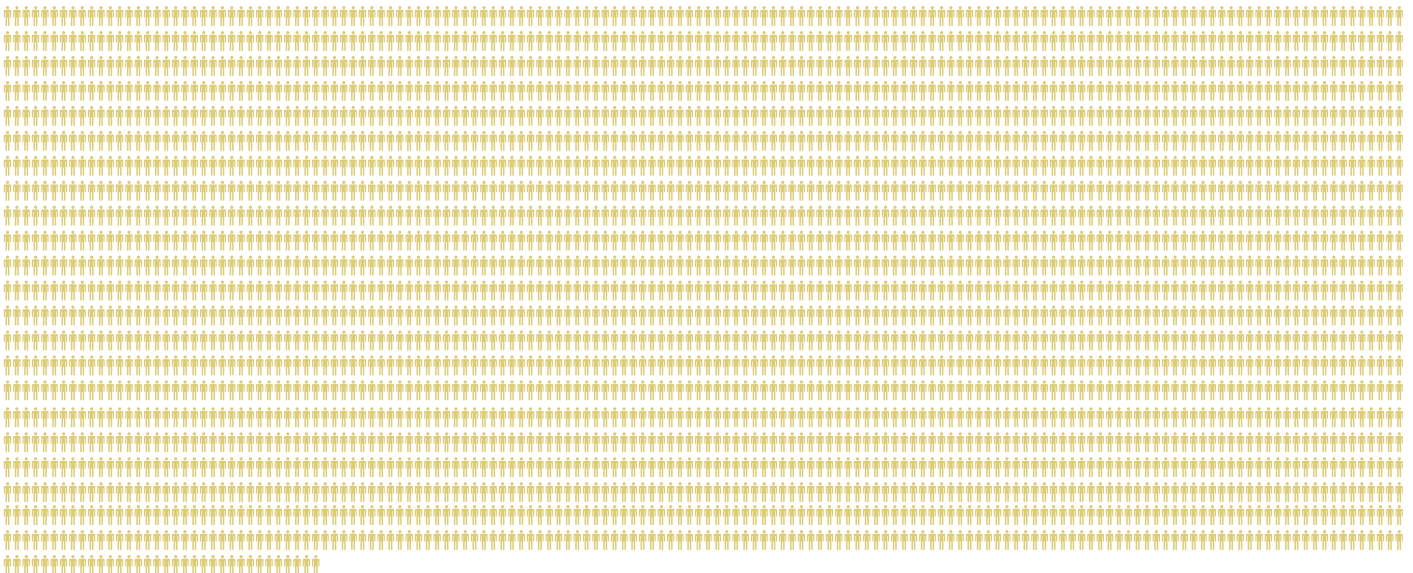
500

Imprisoned Once and  
Still Incarcerated



3,334

Released and Returned 1-25 Times



58

Released and Returned  
26-50 Times



9

Released and Returned  
50-99 Times



3

Released and  
Returned 100+ Times

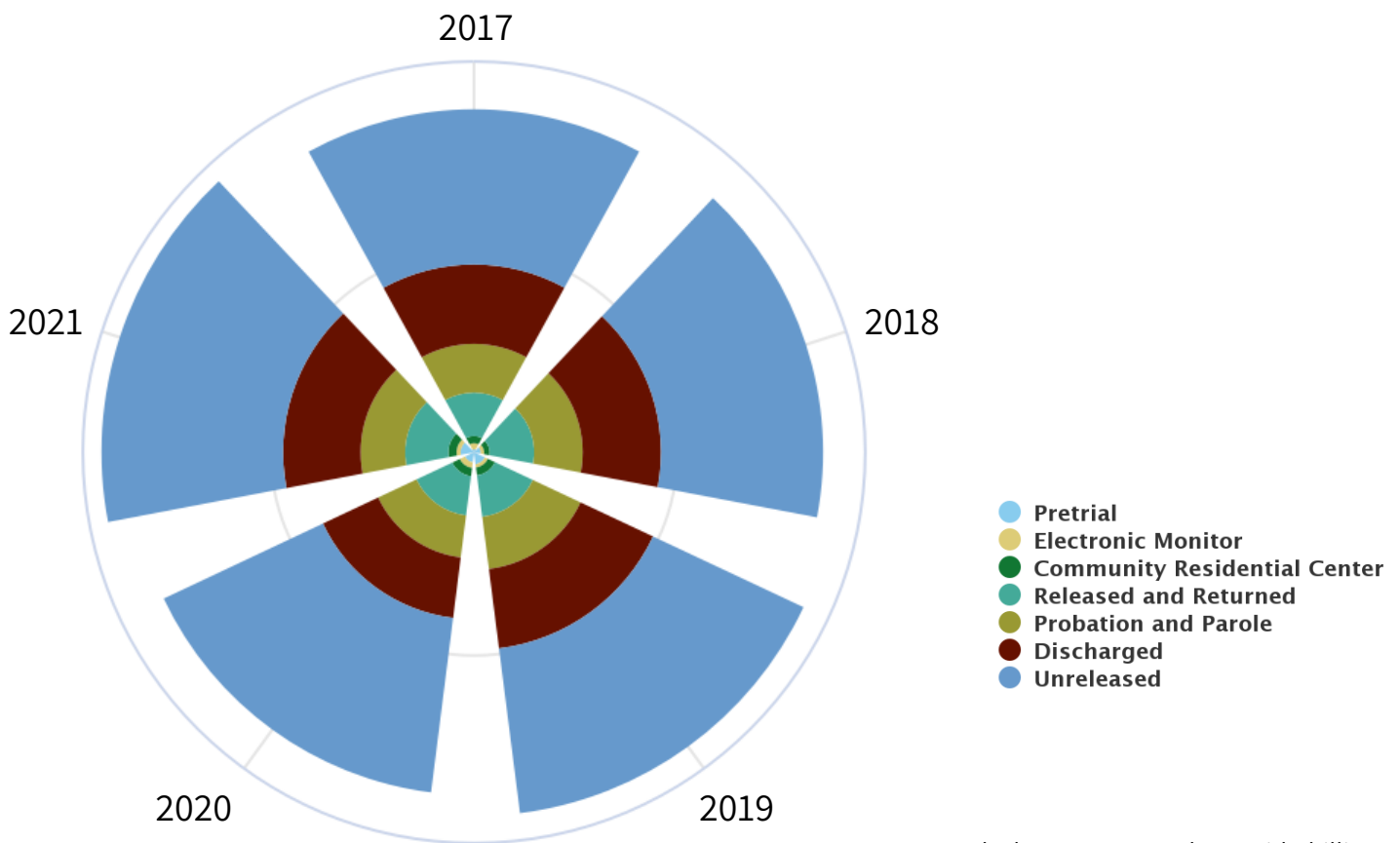


Continued on next page.



## Where Are They 1 Year Later?

Each section of this graph represents the status of separate prisoner groups after one year.



Source: Alaska DOC Research - David Phillips

### Summary

Over the last decade Alaska has seen two large-scale changes to criminal justice administration delegated by SB 91 and SB 54. The state has also seen major changes to the prison population (namely ending private out-of-state prisons for in-state state-owned prisons), a massive statewide recession, an opioid crisis and a global pandemic.

These changes and challenges have led to a fluctuating prison population. Over the last decade DOC has seen growth in the overall prison population, followed by a sharp decline in population, followed by a second period of large growth. Many of these challenges are reflected in the data presented.

This study shows that over a ten-year time span many prisoners are no longer incarcerated. They are no longer incarcerated for their original crime or for a new crime. A correlation is found between length of stay outside of prison and the likelihood of rearrest & return to prison. As time away from prison increases, likelihood of rearrest & return to prison decreases. Rearrest and return to prison is much more likely in the short to medium-term following release. This nuance is not fully captured by more traditional studies of recidivism. Further, this study highlights the growth in pretrial diversion for offenders awaiting the outcome of trial.



A L A S K A

# Department of Corrections

JAN 2023 | Staff

**Offenders in our charge will be treated in a safe and humane manner, and will be expected to enhance their ability to reform every day.**



**Jen Winkelman**

Commissioner

**Jake Wyckoff**

Deputy Commissioner  
Institutions

**Jeremy Hough**

Director of Institutions

**Adam Rutherford**

Director of Health and Rehabilitation Services

**Dianne Godkin**

Executive Assistant

**April Wilkerson**

Deputy Commissioner  
Pretrial, Probation and Parole & Operations

**Dusty Dumont**

Director of Pretrial and Parole & Operations

**Teri West**

Director of Administrative Services

**Betsy Holley**

Communications / Public Information Officer

**Michael Matthews**

DOC Research Analyst

# OFFENDER PROFILE

STATE OF ALASKA  
DEPARTMENT OF CORRECTIONS  
RESEARCH & ANALYSIS



**DOC Research welcomes your questions.**

David Phillips  
Research Analyst  
[david.phillips@alaska.gov](mailto:david.phillips@alaska.gov)

Jesse Stringer  
Research Analyst  
[jesse.stringer@alaska.gov](mailto:jesse.stringer@alaska.gov)  
907-465-3425

**Department of Corrections - Juneau**

P.O. Box 112000  
Juneau, Alaska 99811-2000  
Phone: 907-465-4652  
Fax: 907-465-3390

**Department of Corrections - Anchorage**

550 West 7th Avenue, Suite 1800  
Anchorage, Alaska 99501  
Phone: 907-334-2381  
Toll Free: 844-934-2381